



16th October 2024

Talking, tasting, Science and Mezcal

por Virginia Aranda



“(..) y la diosa Mayahuel fue desmembrada y comida por los demonios; Quetzacoatl, dolido ante la pérdida de su amor, plantó sus restos y de estos nació el maguey”





....Maguey grows from love

I am an **ARCHITECT**

parametric design

form, space, light, color... SHAPES BEHAVIOUR



from architecture, I developed
creative thinking

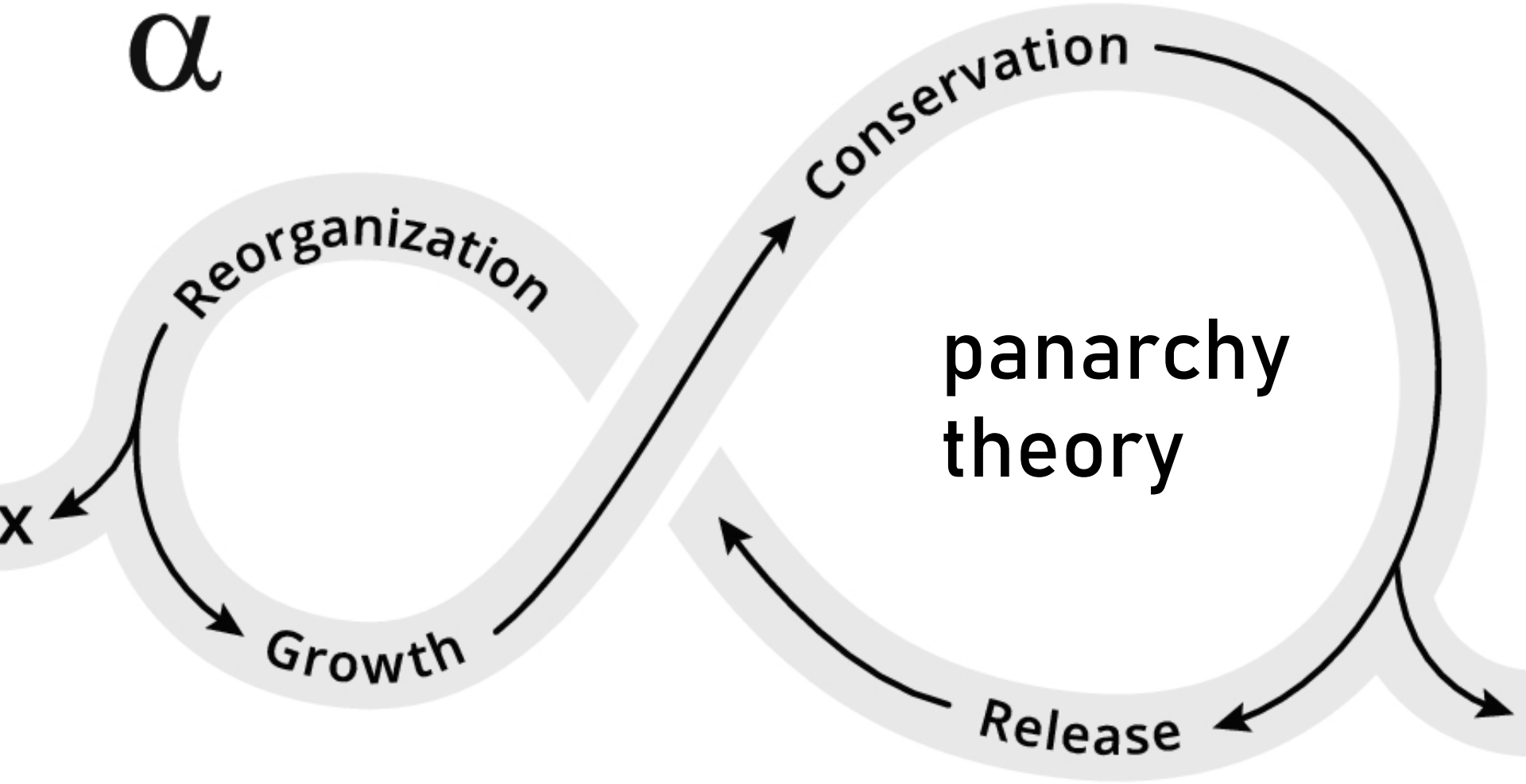


Toys that stimulate creativity

K

As a creative

α



x

Reorganization

Conservation

Growth

panarchy
theory

Release

r

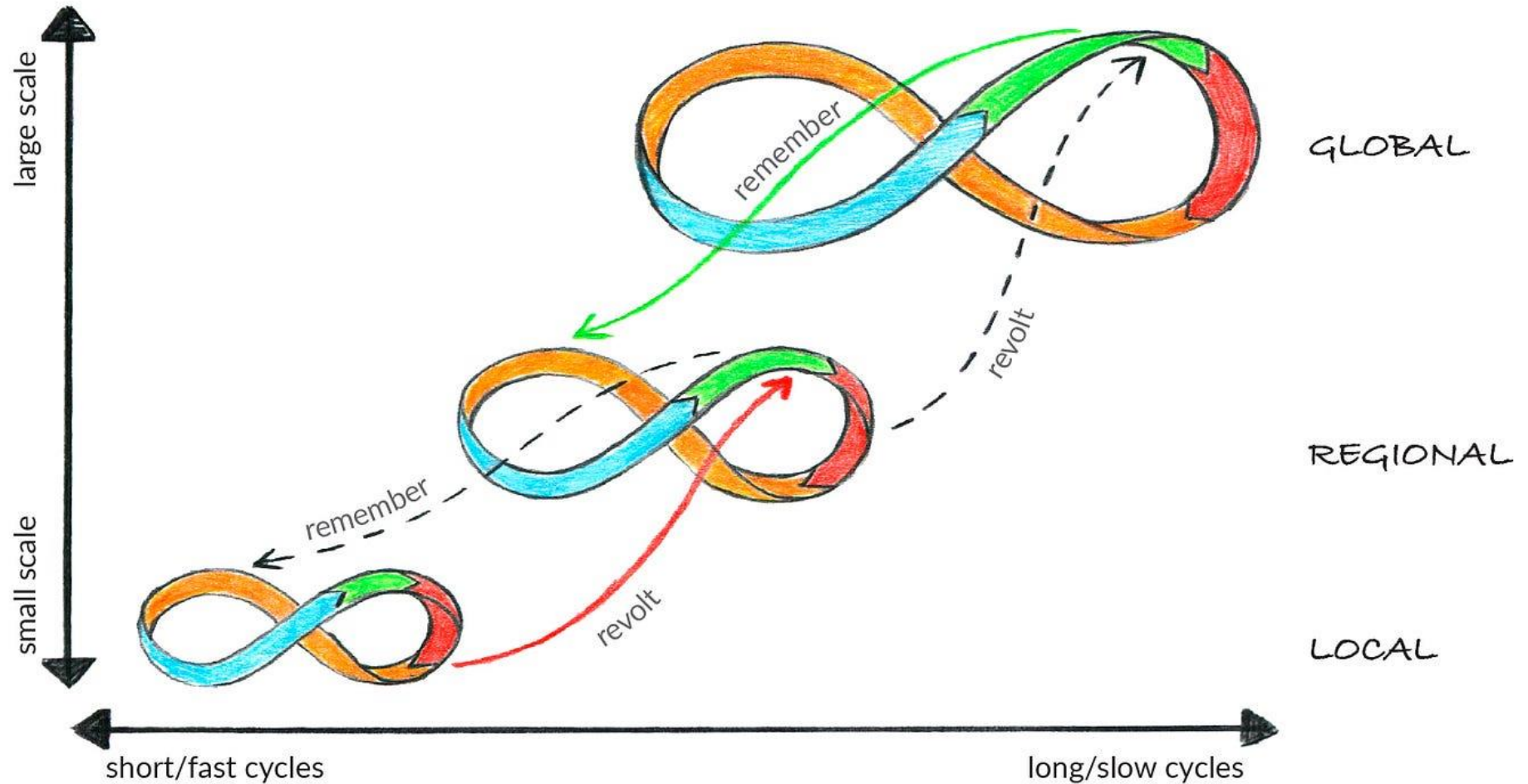
Try to understand

Ω

phD

panarchy = resilience
grounded theory

PANARCHY OF INTERCONNECTED ADAPTIVE CYCLES AT DIFFERENT SPATIAL AND TEMPORAL SCALES




At the end of my PhD

More questions, than answers

IGNORANCE IS BLISS

Solution = Mezcal



A glass of golden mezcal with a worm on the rim, next to orange slices and a pile of red chili powder on a wooden surface.

Try to drink a Mezcal with a worm in it
You'll forget... even

**Para todo mal, un mezcal
Para todo bien, también....
Y sino tiene remedio, LITRO Y MEDIO..
salud**

So you will need ... START tesis
That is resilience - in

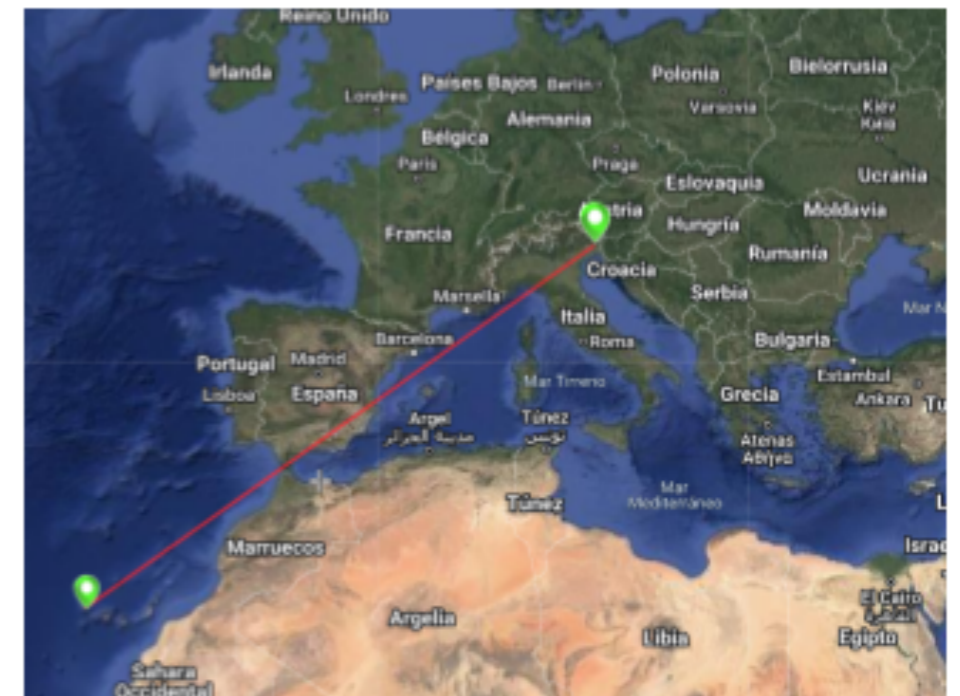
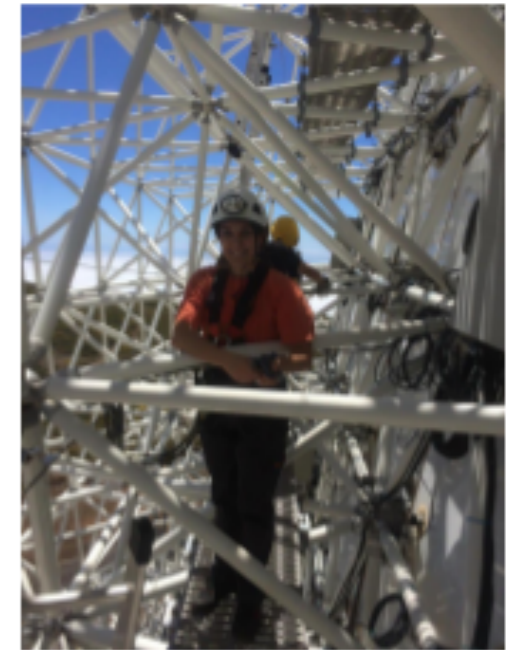
Irene Burelli - postdoc

Academic Path

- **Bachelor in Physics** (University of Trieste)
Focus: Short GRB spectral analysis as gravitational wave counterparts.
- **Master in Astrophysics and Cosmology** (University of Trieste)
Focus: GRB detection at Very High Energy with CTA.
- **PhD in Mathematics, Physics, and Computer Science** (University of Udine, associated with INFN)
Focus: Divergent pointing strategies for CTAO

My current workplace is not in Barcelona but in Canary Islands

Not only is this my first postdoc, but it's also my first time working abroad! Moving from the mountains of Friuli to the stunning Canary Islands for the MAGIC experiment has been quite the adventure



Joan Cano i Martínez – Knowledge & Technology Transfer Unit

- From Montcada i Reixac
- Studied fundamental physics at UB



Ringui & Dingui



PAU FUSTÉ MARTÍN

Gràcia, Barcelona

Physics degree UAB

Erasmus Heidelberg

IGN2 internship

QED - TFG

IFAE Master UAB

2HDM - TFM

HGTD - IFAE Pixels Group



Physics

Sports

Traveling

Reading

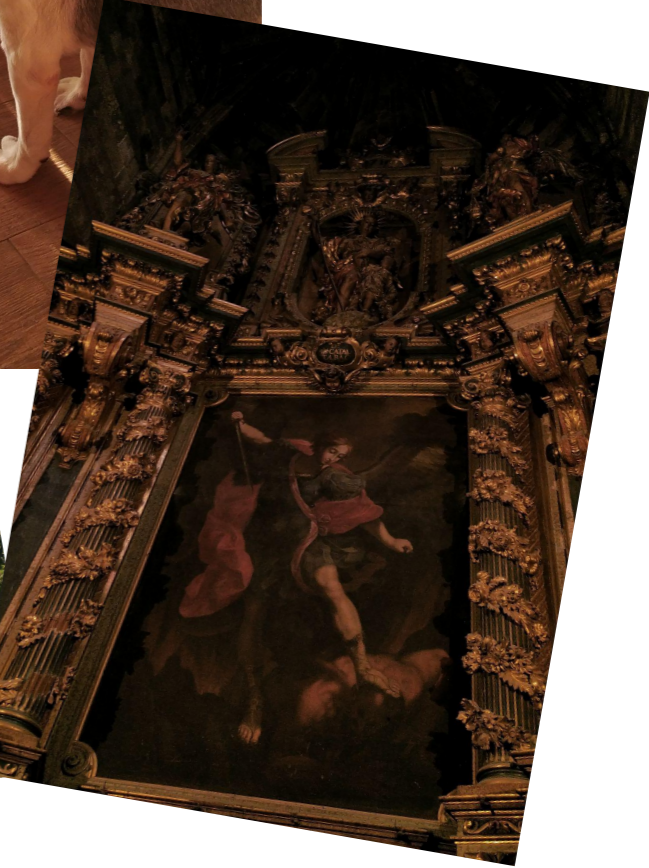
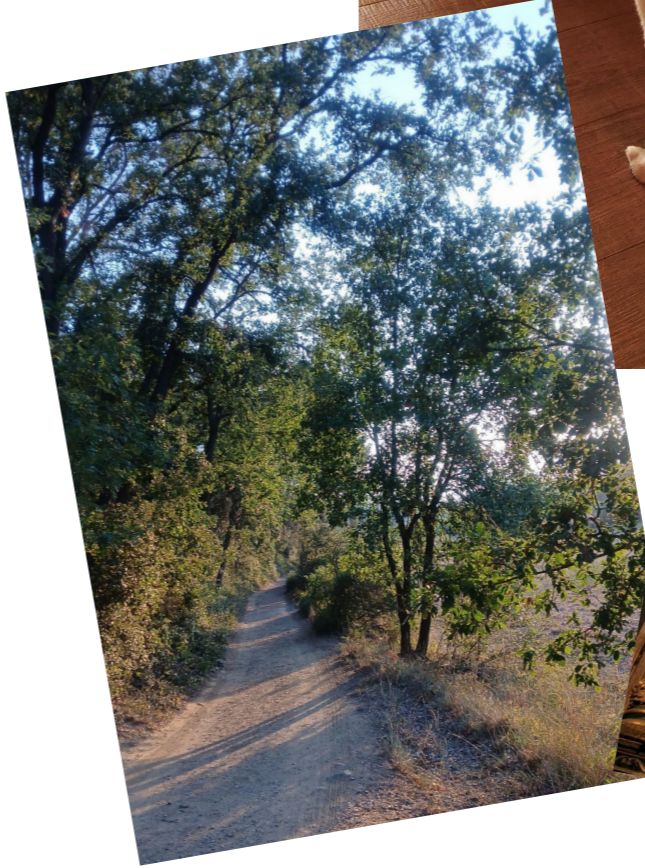
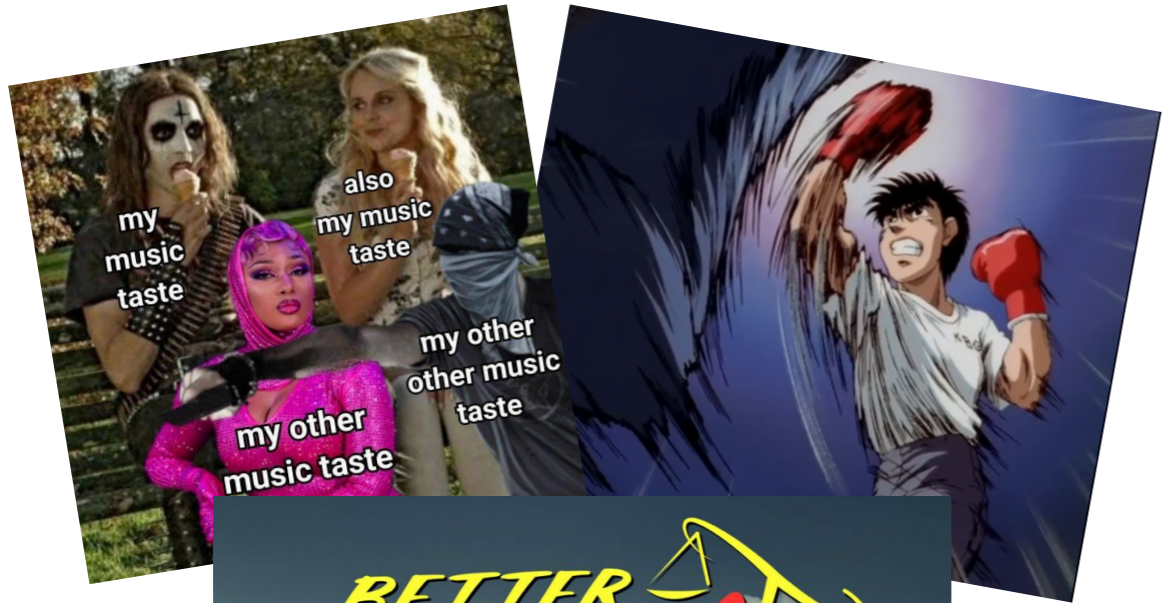
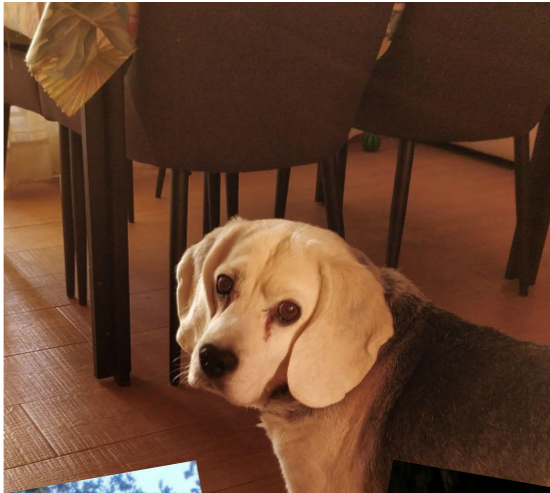
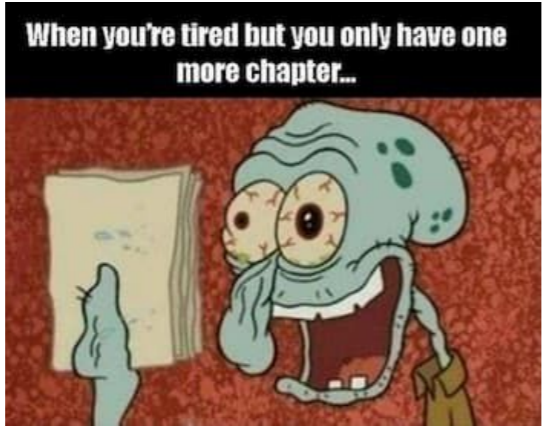
Movies

Music

Food

Having fun

Javier García Romero



IFAE Welcome Day

Ariadna Gómez del Pulgar Martínez

PhD student at the Quantum Computing Technologies group

16th October 2024

Introduction



Academic background

- 2016 • BSc in Mathematics
Universitat de Barcelona
- 2022 • BSc in Physics
Universitat de Barcelona
- 2023 • MSc in Quantum Science and
Technology
- 2024 UB - UAB - UPC

Trajectory at IFAE

- 2021 • IFAE Summer Fellowship
 - 2022 • Bachelor thesis
 - 2024 • Master thesis
-] NitrAl
- PhD: impact of cosmic radiation
on superconducting qubits +
dark matter detection



Hobbies



Martine Lokken

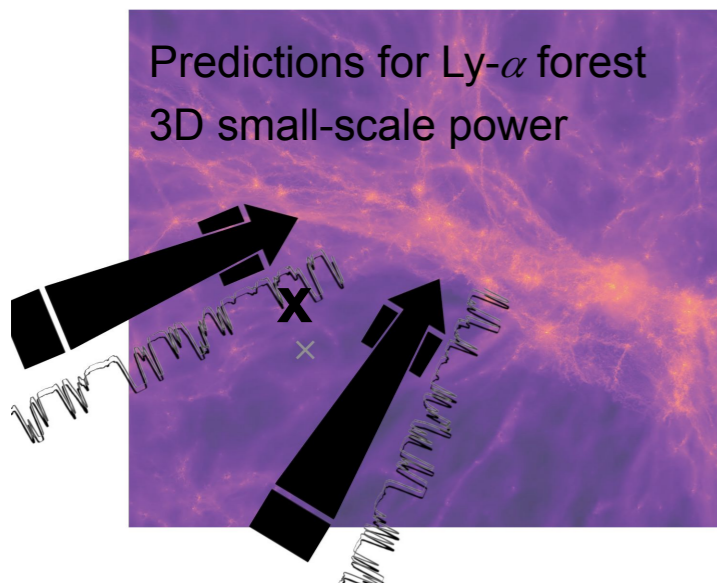
Postdoc, Observational Cosmology Group

Lyman- α cosmology, Galaxies x CMB secondaries + alternative clustering statistics

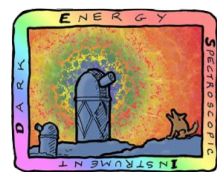
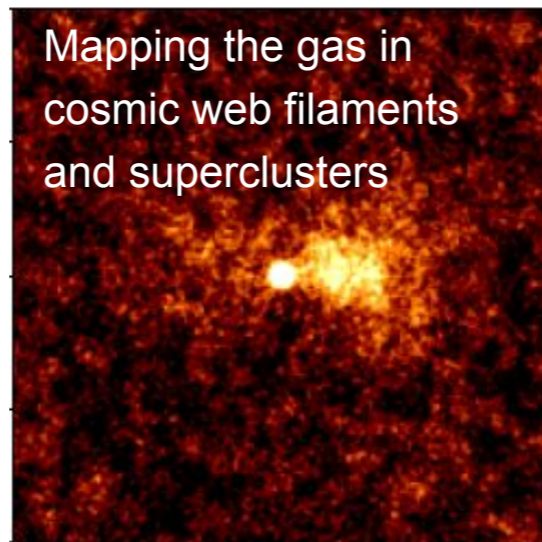


Research interests

Predictions for Ly- α forest
3D small-scale power



Mapping the gas in
cosmic web filaments
and superclusters



DARK ENERGY
SPECTROSCOPIC
INSTRUMENT

U.S. Department of Energy Office of Science

Atacama Cosmology
Telescope



Other interests

Environmental sustainability



Dance



Music



Language and culture

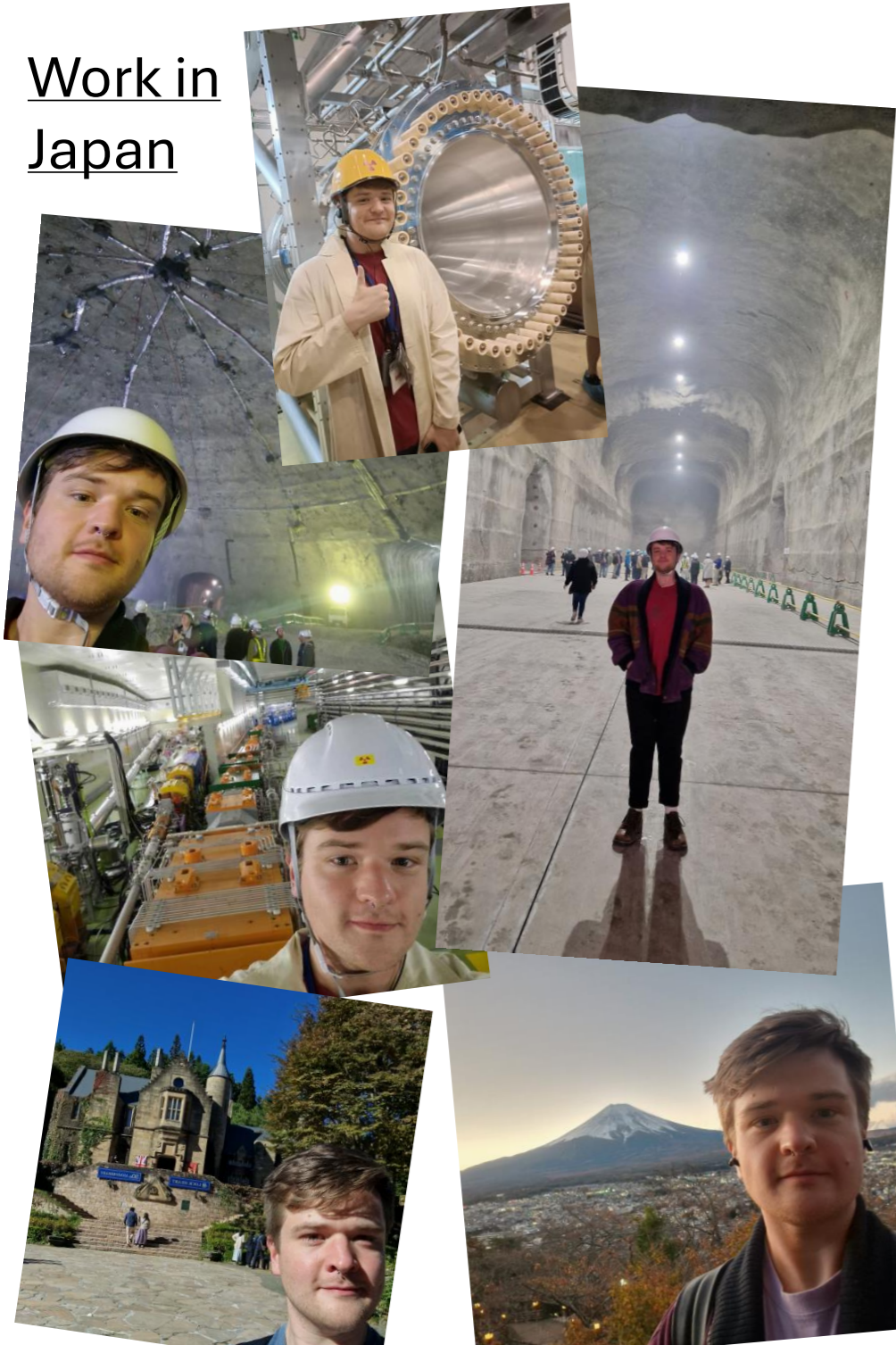


Website and contact

<https://marlena6.github.io/>, mlokken@ifae.es

Office: C7b-146 (downstairs)

Work in Japan



Chicago for NuFact2024

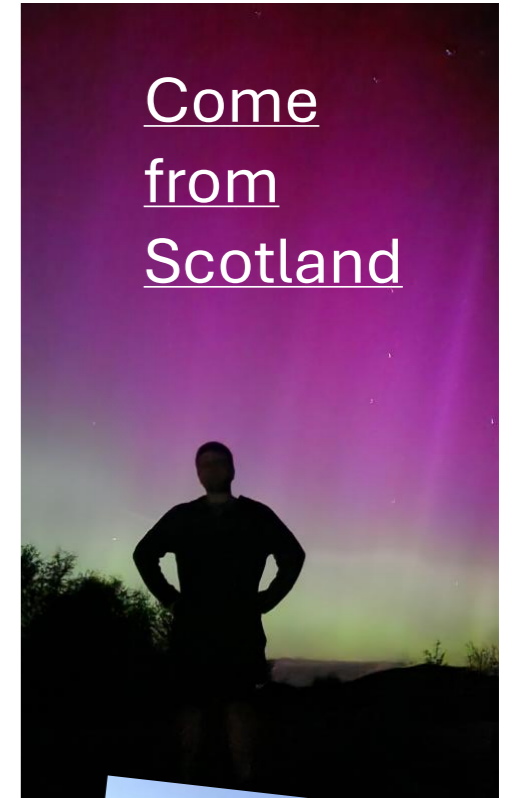


Sometimes go to other places too

Milan for Neutrino 2024

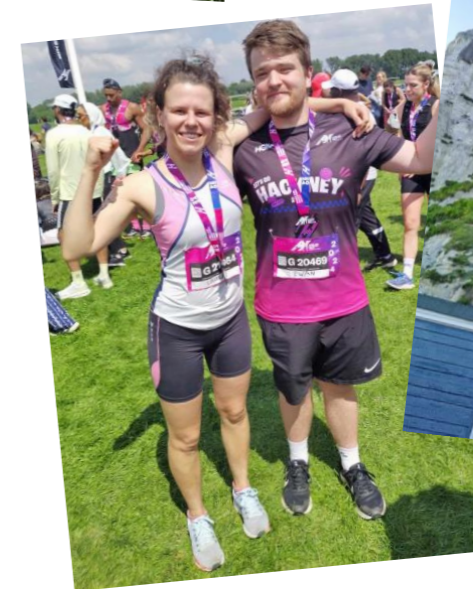


Come from Scotland

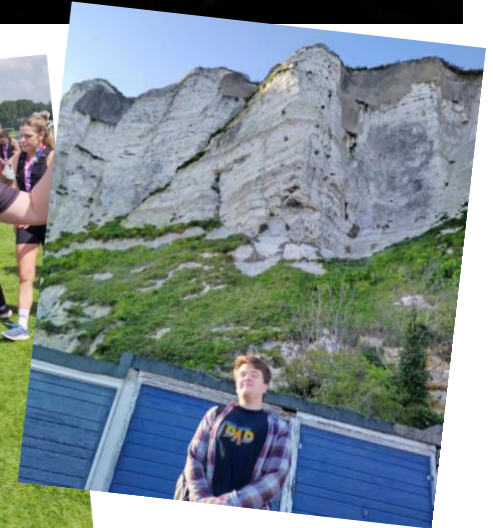


Ewan Miller

Recently started my first postdoc in the IFAE neutrino group working on the T2K and Hyper-K experiments



Did PhD in London



BY: **Salvador Moreno Gómez** ...



I'M **23** YEARS OLD.



THIS IS A PICTURE OF ME.

THESE ARE MY FAVORITE COLOURS:



THEY ARE MY FAVORITE PEOPLE:



THESE ARE MY FAVORITE FOODS:



THIS IS MY FAVORITE SPORT:



THIS IS MY FAVORITE ANIMAL



THIS IS MY FAVORITE SUBJECT:



THIS IS SOMETHING YOU DIDN'T KNOW ABOUT ME:



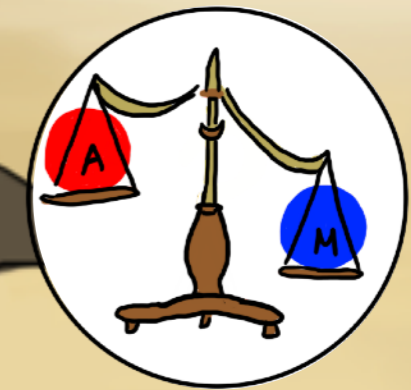
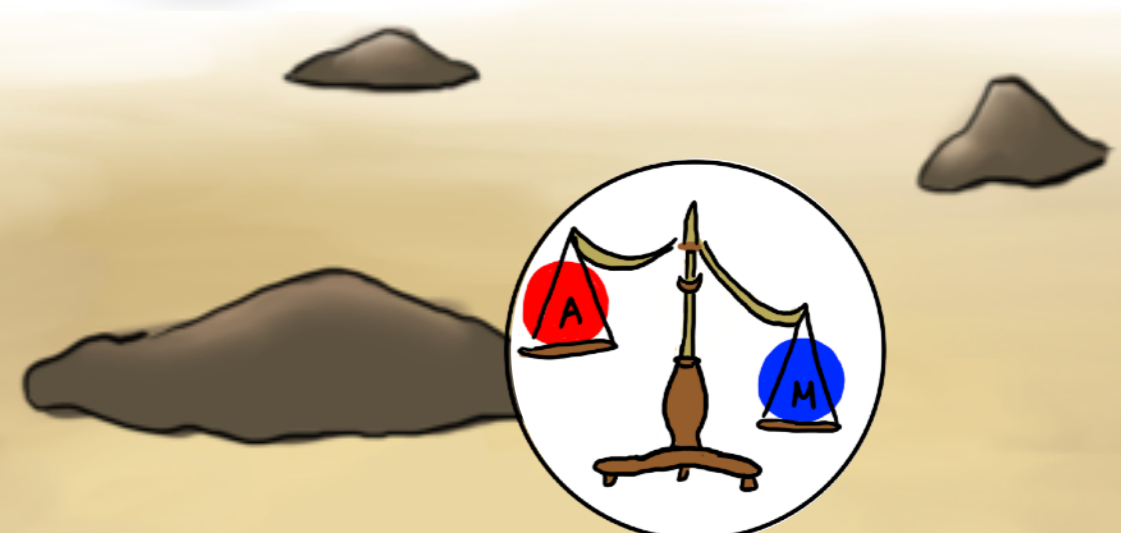
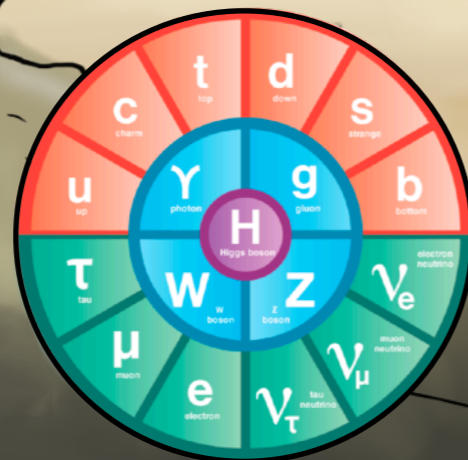
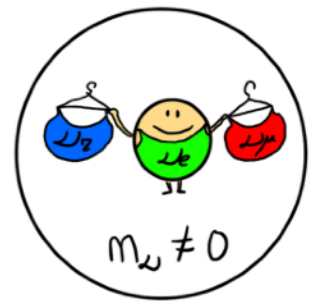
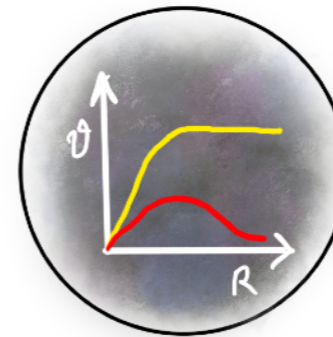
SHHHH!

Clara Murgui

Beatriz Galindo fellow



TIME

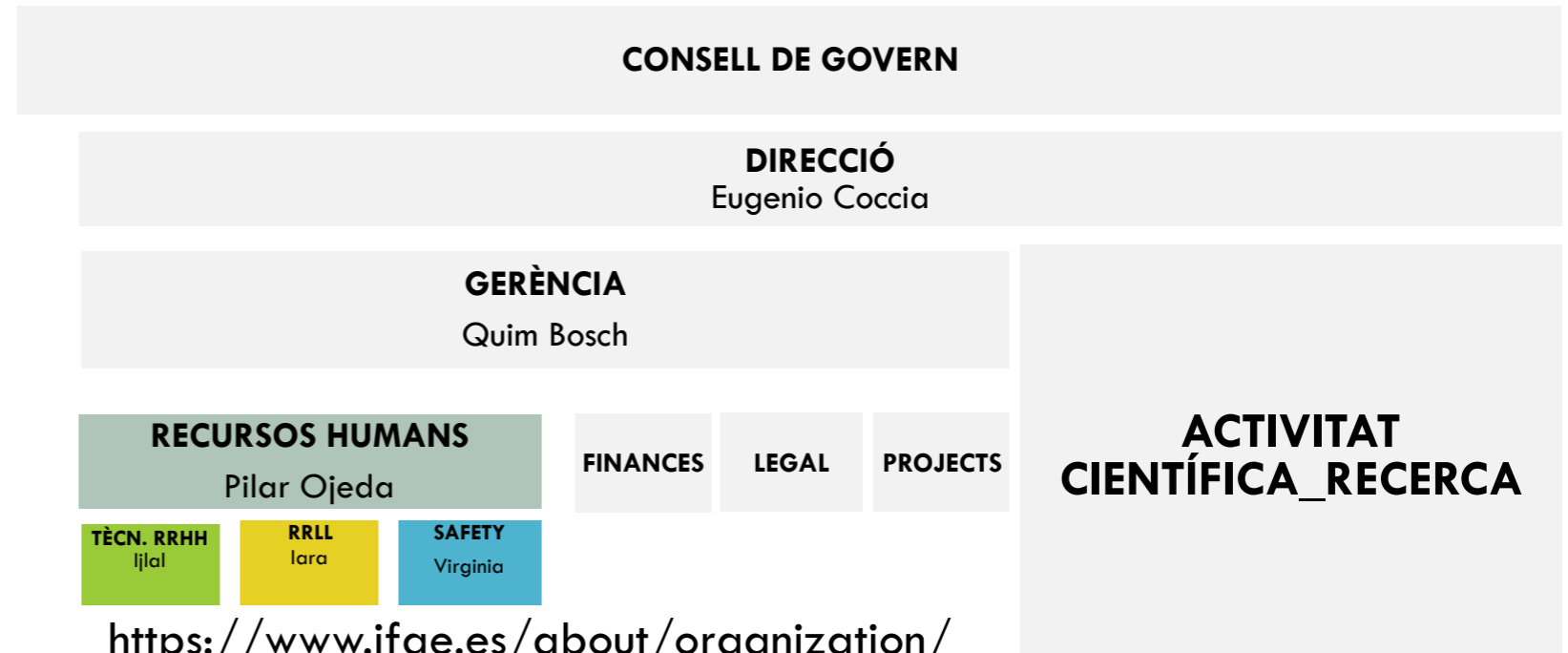




DEP. RECURSOS HUMANS

ORGANIGRAMA RECURSOS HUMANS

Pilar Ojeda



<https://www.ifae.es/about/organization/>

MISSIÓ I FUNCIONS MANAGER RRHH

OBJECTIU: impulsar, coordinar i dur a terme les accions relacionades amb les polítiques relacionats amb el personal a nivell legal laboral, concretament en les àrees de:

1. Relacions laborals
 - a. Nòmina i contractació, i costos de la plantilla
 - b. Consultes del personal i de la Direcció en matèria legal laboral
 - c. Relacions amb la representació del personal
 - d. Mesa negociadora Conveni de la Recerca a Catalunya
 - e. Totes aquelles que siguin encarregades per la Direcció a nivell legal laboral
2. Prevenció de riscos laborals:
 - a. Vetllar per identificar, eliminar i/o minimitzar els riscos laborals des del punt de vista de:
 - i. La seguretat en el treball
 - ii. L'ergonomia
 - iii. La psicociologia
 - iv. La higiene industrial
 - v. La salut
 - b. La relació amb la representació de les persones treballadores en matèria preventiva
 - c. La coordinació de l'activitat empresarial (CAE) davant visites internes i externes de les persones treballadores
 - d. El Servei de Prevenció Aliè (SPA)
3. La Formació
4. La Carrera Professional
5. La Comunicació Interna:
 - a. Plans de comunicació i organització del personal, Pla d'Igualtat, Pla anti-asselament, Protocol de desconexió digital
 - b. Control de presència: FACTORIAL
 - c. Relacions externes amb d'altres Institut CERCA de Recursos Humans, Generalitat, UAB, BIST, entre d'altres
 - d. Comunicats al personal de caràcter legal laboral: model 145, informació de nòmina, de normativa que ens és d'aplicació.

Mario Pecimotika

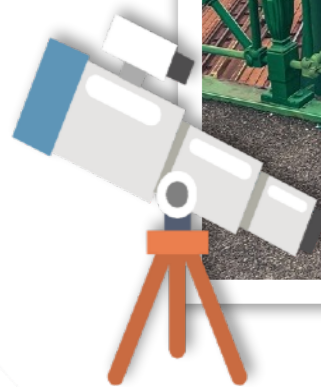
September 2024



Postdoc at IFAE

Gamma-ray Group

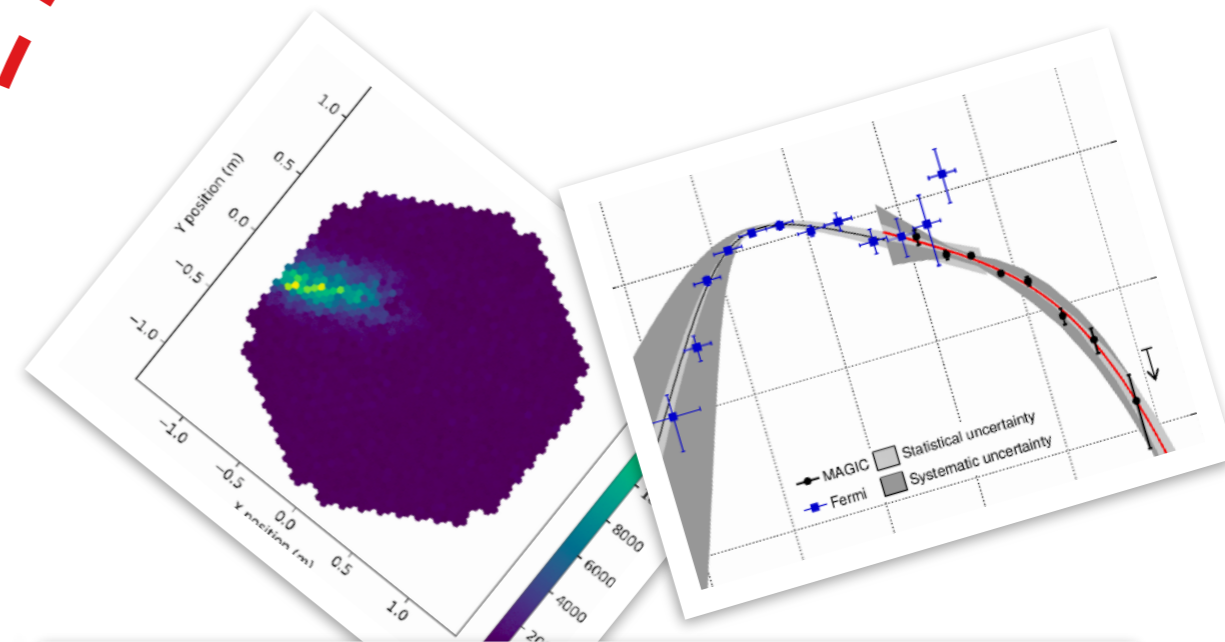
(experiments CTA and LST)



June 2024

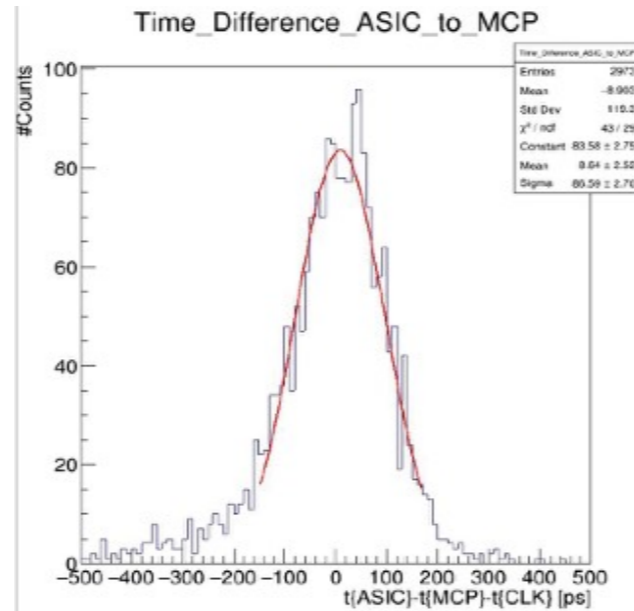
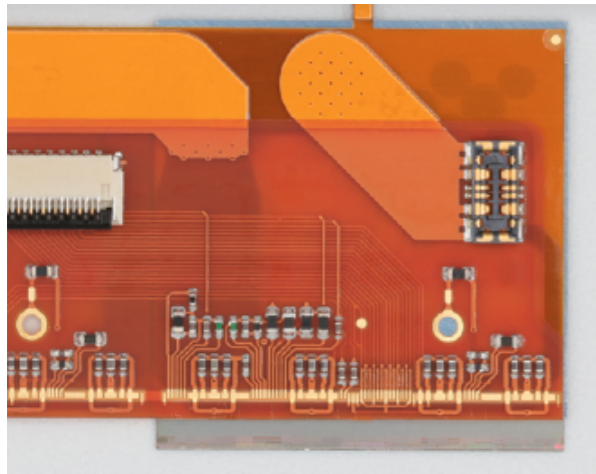
PhD in Physics

University of Rijeka, Croatia



Krishnan Rama (aka R Krishnan)

Postdoc at ATLAS pixel group



Kerala, India

PhD from University of Warwick, UK

Neutrino model building

$$\sin^2 \theta_{13} = 0.022000^{+0.00069}_{-0.00069}$$

$$\frac{1}{3} \sin^2 \frac{\pi}{12} = 0.0223$$

$$\sqrt{\frac{\Delta m_{21}^2}{\Delta m_{31}^2}} = 0.1715^{+0.0035}_{+0.0030}$$

$$\frac{\sqrt{2} - 1}{\sqrt{2} + 1} = 0.1716$$

Sujatha ❤️
Postdoc
ICE-CSIC



FABRIZIO ROMPINEVE

Ramón y Cajal fellow



Where I started

Simon Samuroff

Postdoc, observational cosmology group

Background: weak lensing, cosmic shear, cosmology with galaxies

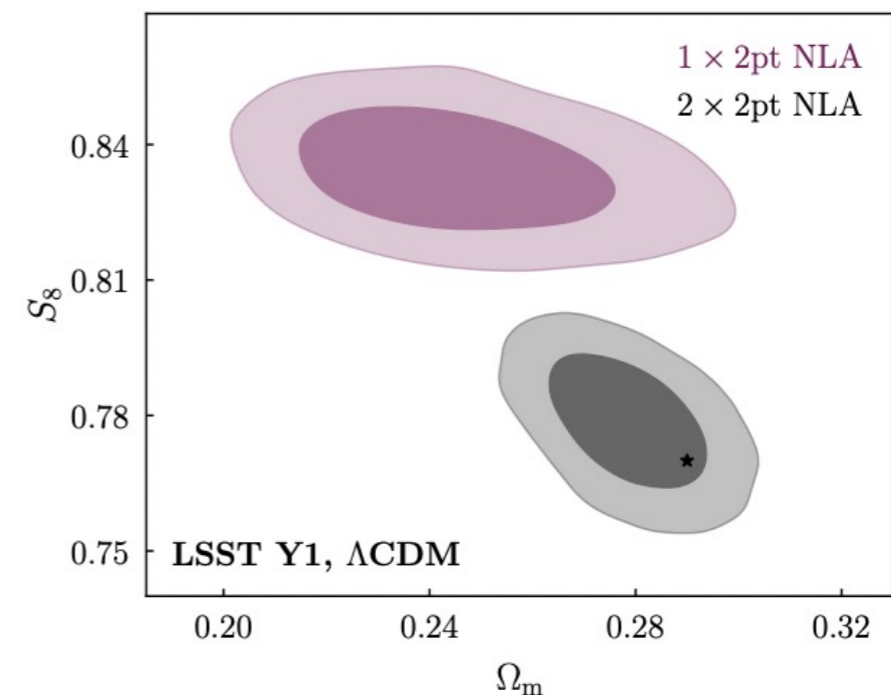
Collaborations: Dark Energy Survey



LSST/Rubin-DESC



A bit more detail: One focus is modelling/mitigating astrophysical lensing systematics (in particular intrinsic alignments). Part of DES Y3 3x2pt, now working on shear 2pt measurement/modelling for DES Y6.





Xavier
Sibina
Estapé

Tamara Vázquez Schröder

German!



Studied Physics as undergraduate in Universidad La Laguna (ULL), **Tenerife, Canary Islands (Spain)**



PhD in Particle Physics with Universität Göttingen, **Germany**

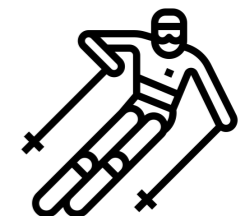


ATLAS Collaborator since 2010

Born in **Argentina** (not Buenos Aires!)



Postdoc with McGill University (based at **CERN, Geneva, Switzerland**) + CERN Fellowship + CERN Junior Limited-Duration (LD) Staff



Ramón y Cajal 2022 grant
Tenure-track researcher in IFAE **since Sept 2024**

Looking forward to working
(and coffee drinking / salsa dancing / climbing / hiking / going to concerts / etc)

with you!

