

Comparison CC0 pion data and LFG neut

CC0pion

$$X^2_{\text{global}} = 190,9$$

$$X^2_1 = 17,8$$

$$X^2_2 = 37,1$$

$$X^2_3 = 35,9$$

$$X^2_4 = 15,0$$

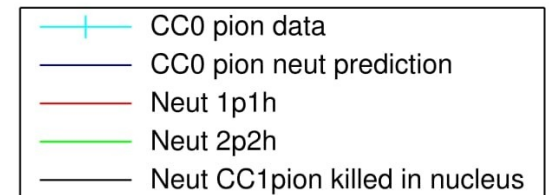
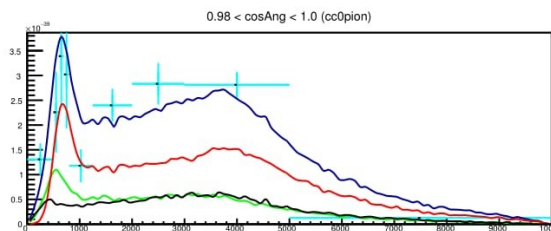
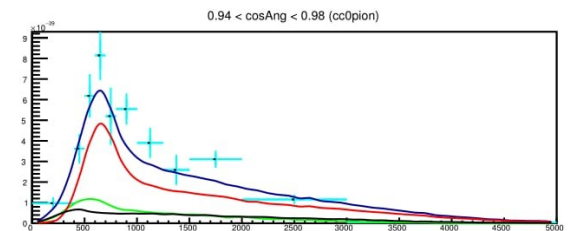
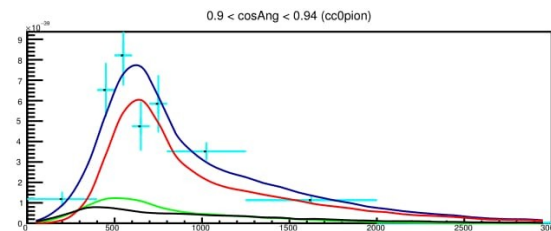
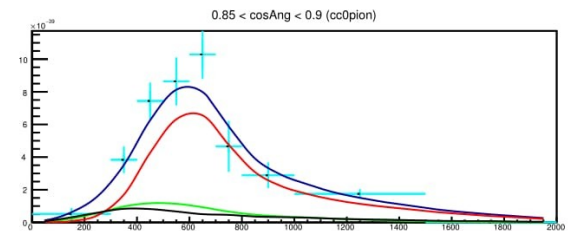
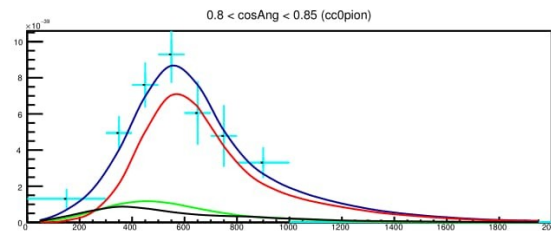
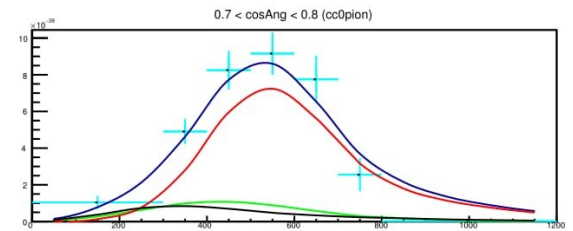
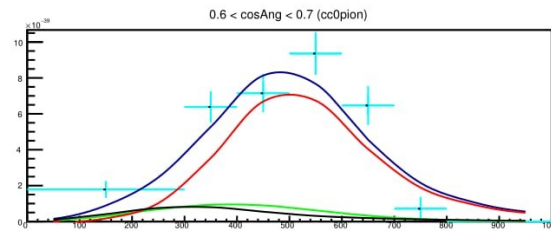
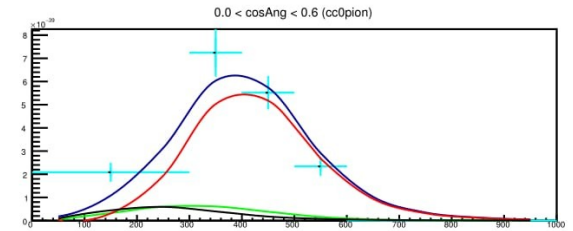
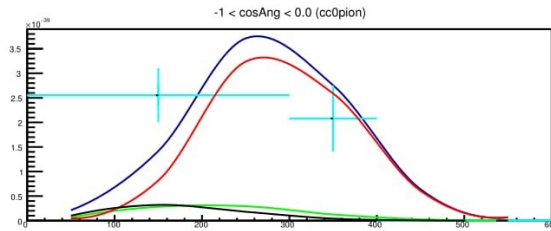
$$X^2_5 = 14,7$$

$$X^2_6 = 14,8$$

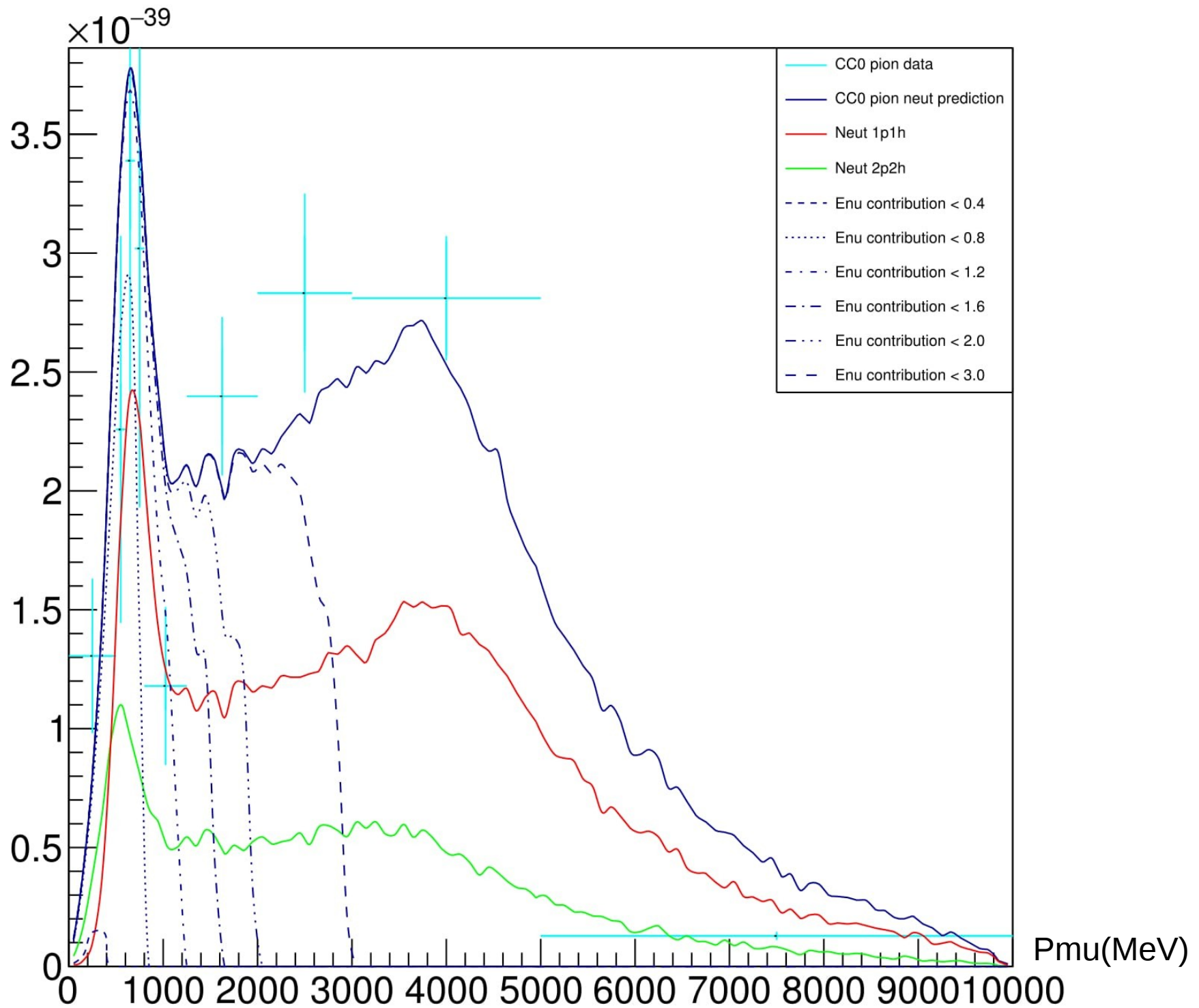
$$X^2_7 = 29,8$$

$$X^2_8 = 51,1$$

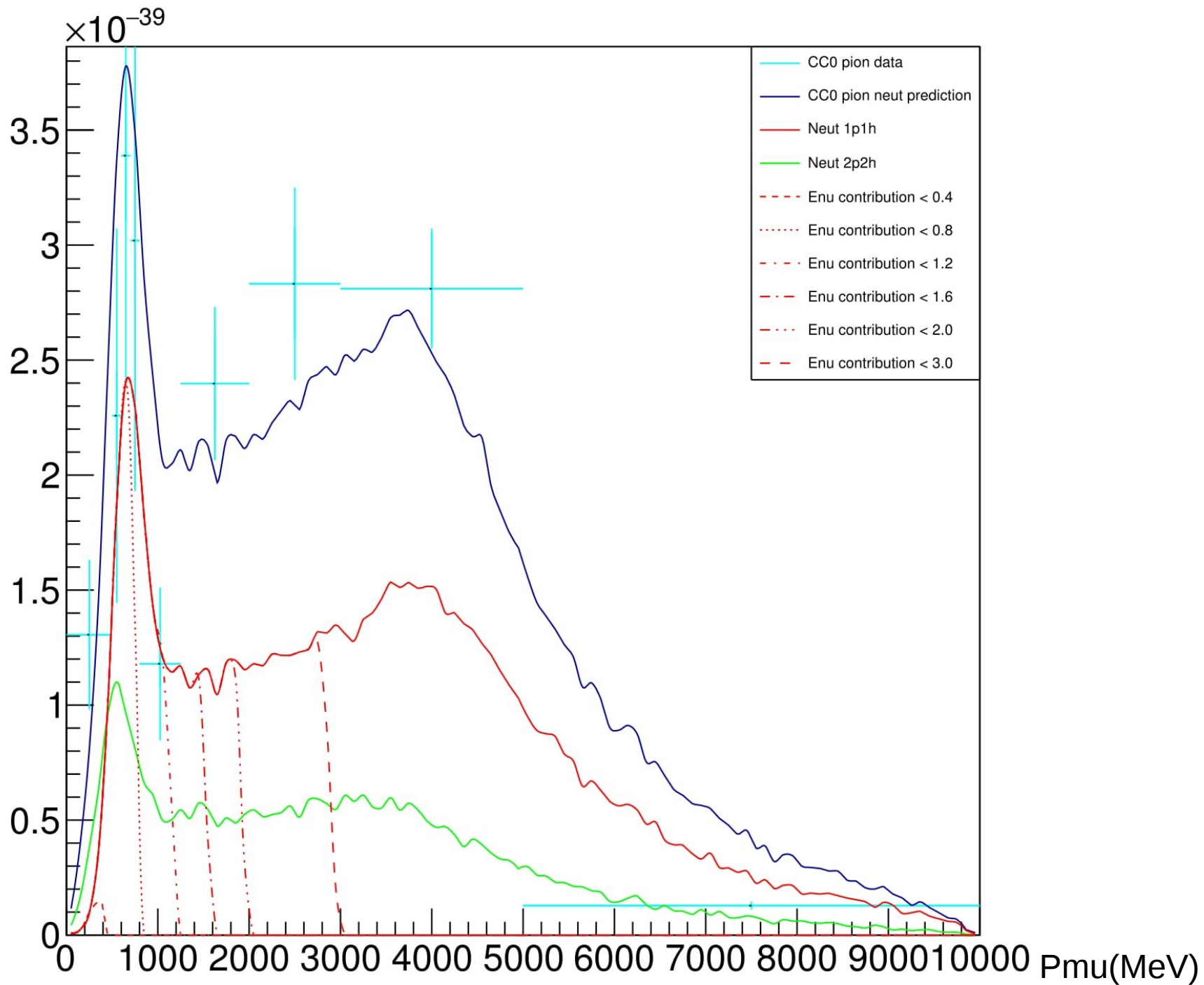
$$X^2_9 = 49,7$$



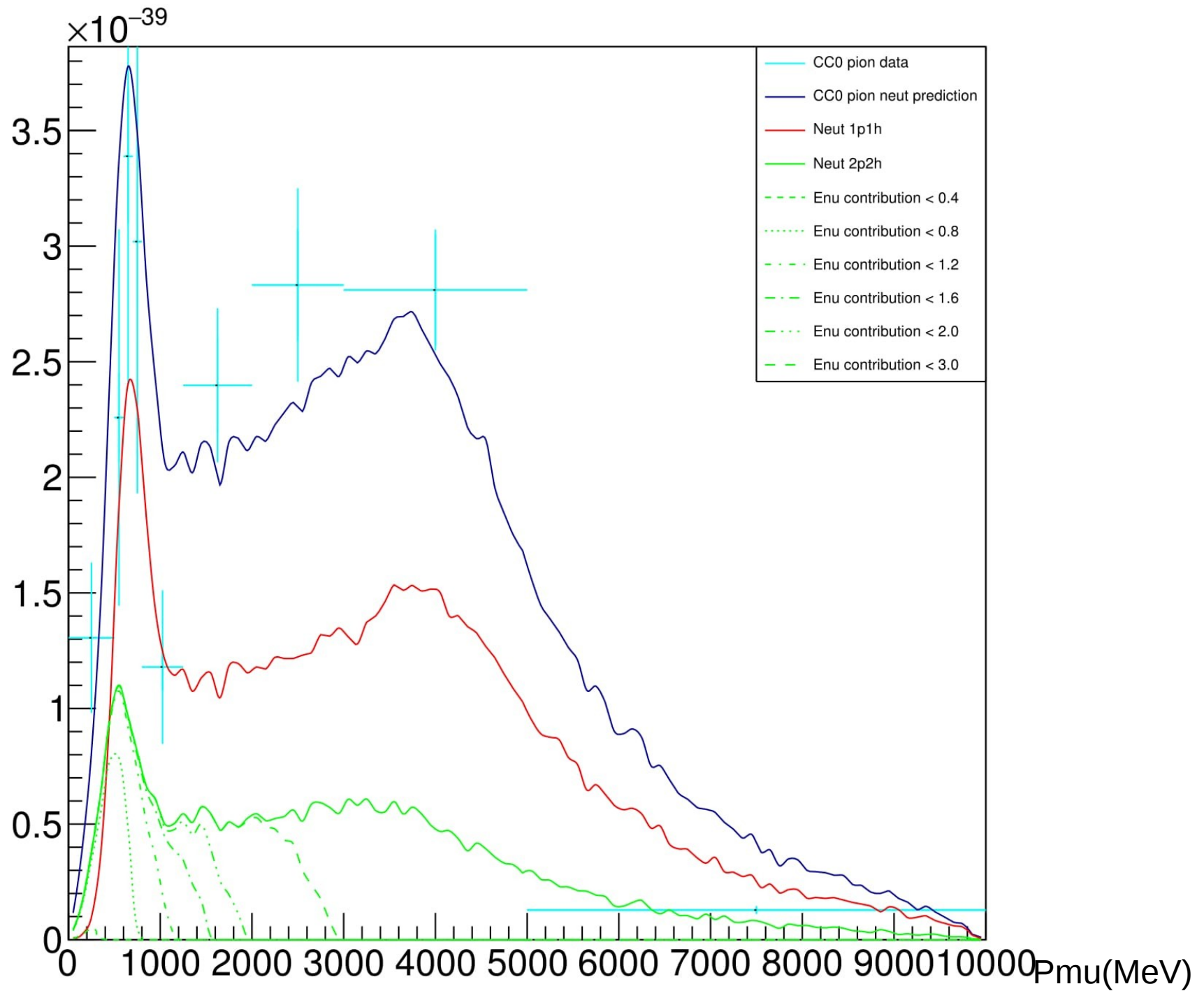
$0.98 < \cos\text{Ang} < 1.0$ (cc0pion)



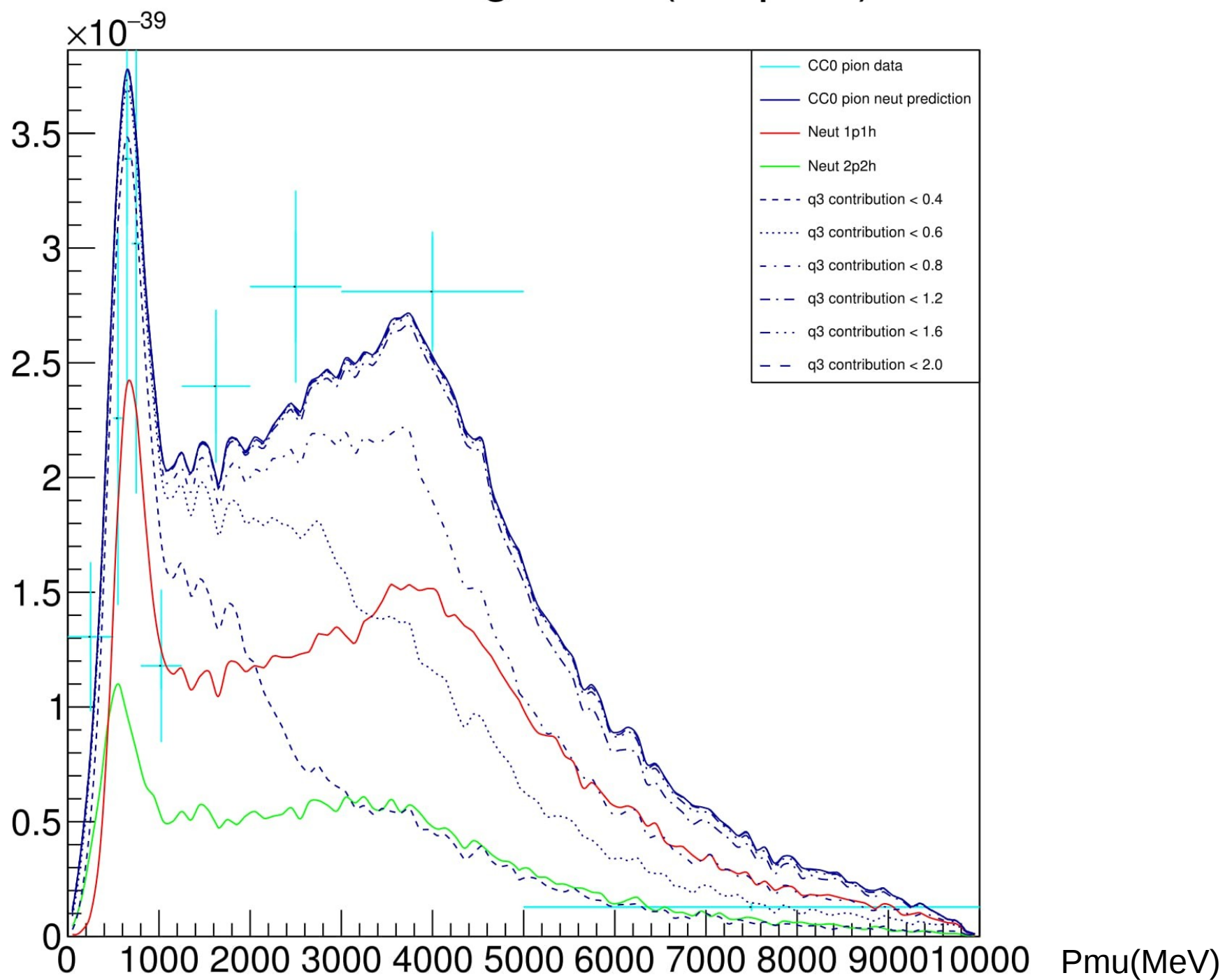
$0.98 < \cos\text{Ang} < 1.0$ (cc0pion)



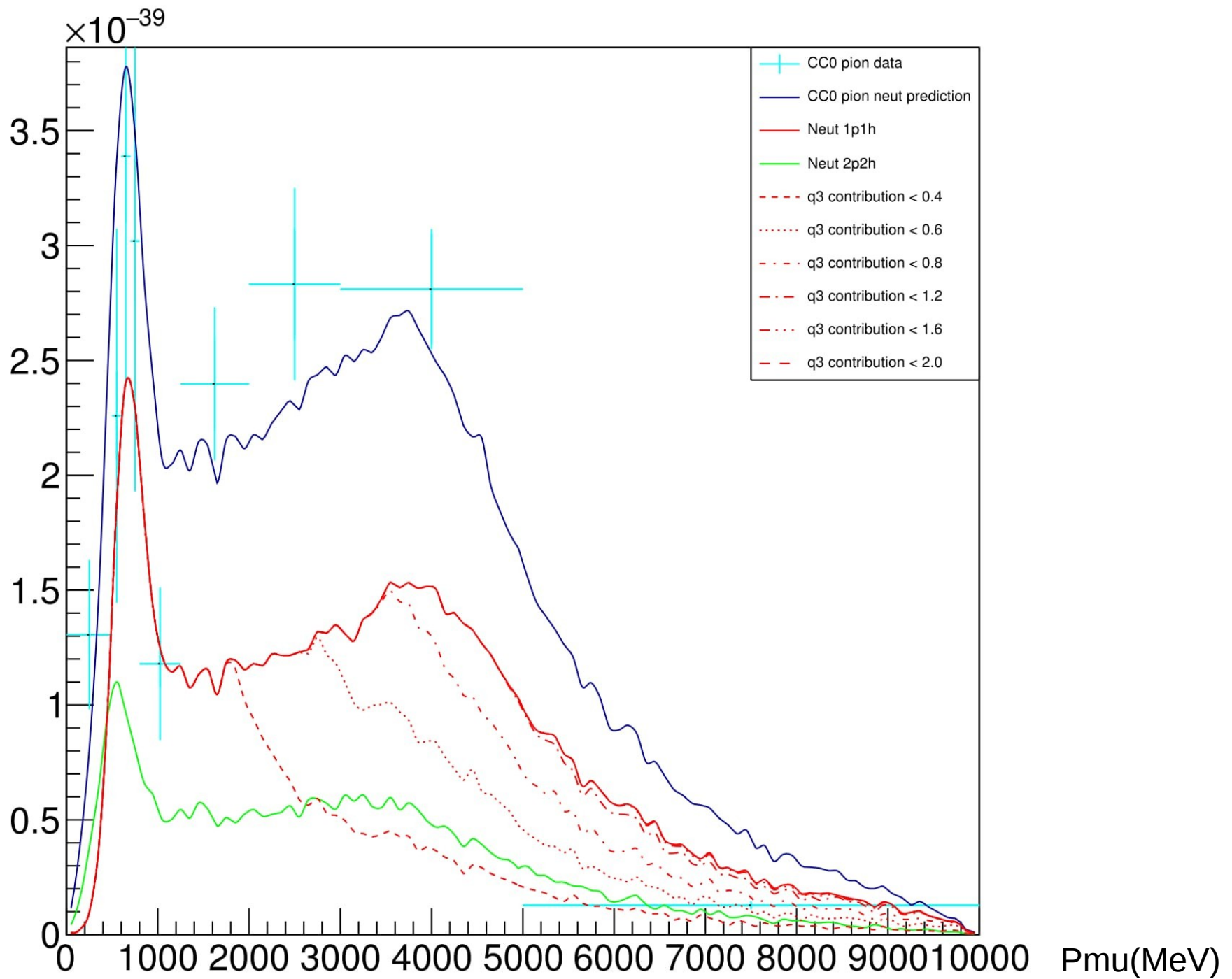
$0.98 < \cos\text{Ang} < 1.0$ (cc0pion)



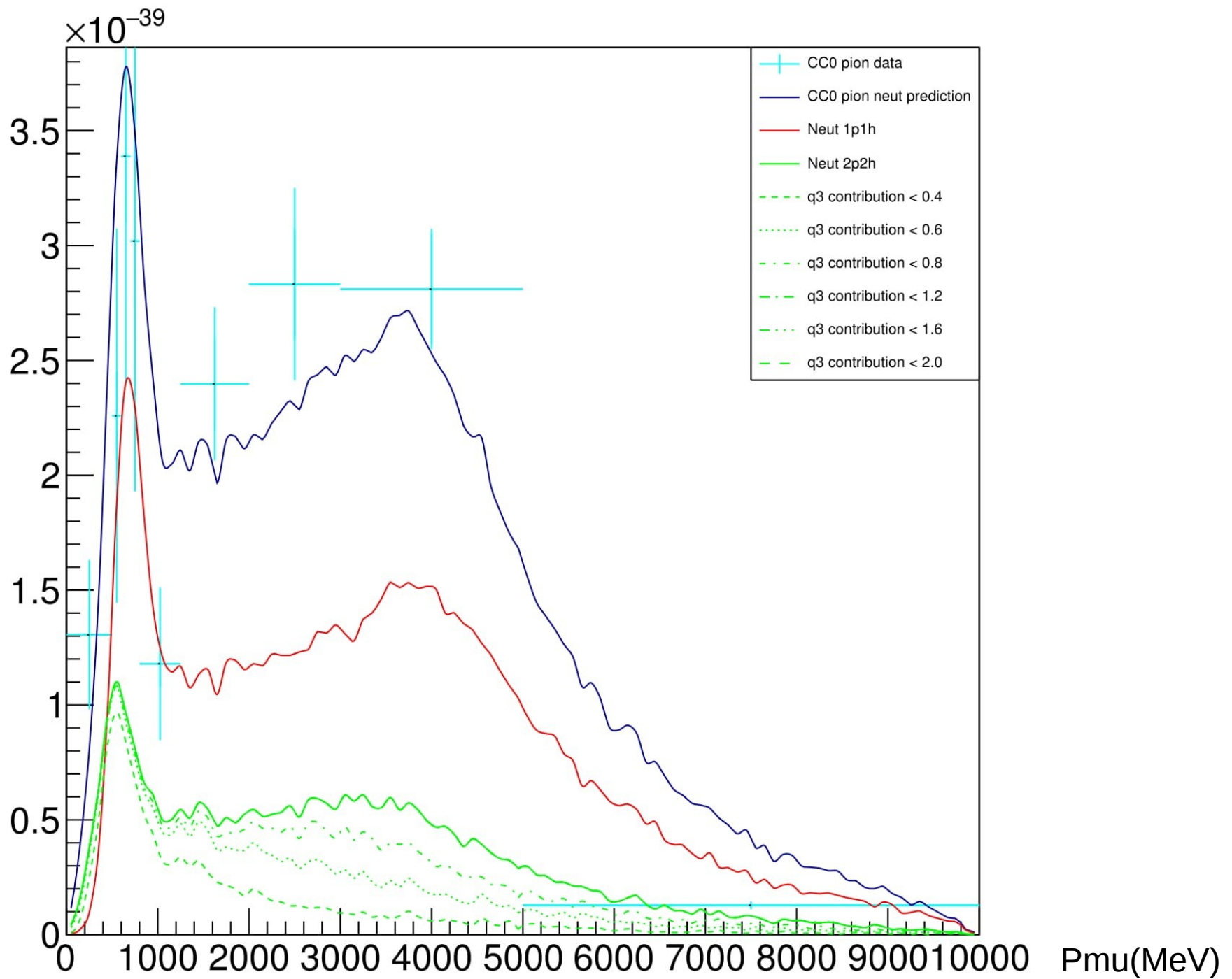
$0.98 < \cos\text{Ang} < 1.0$ (cc0pion)



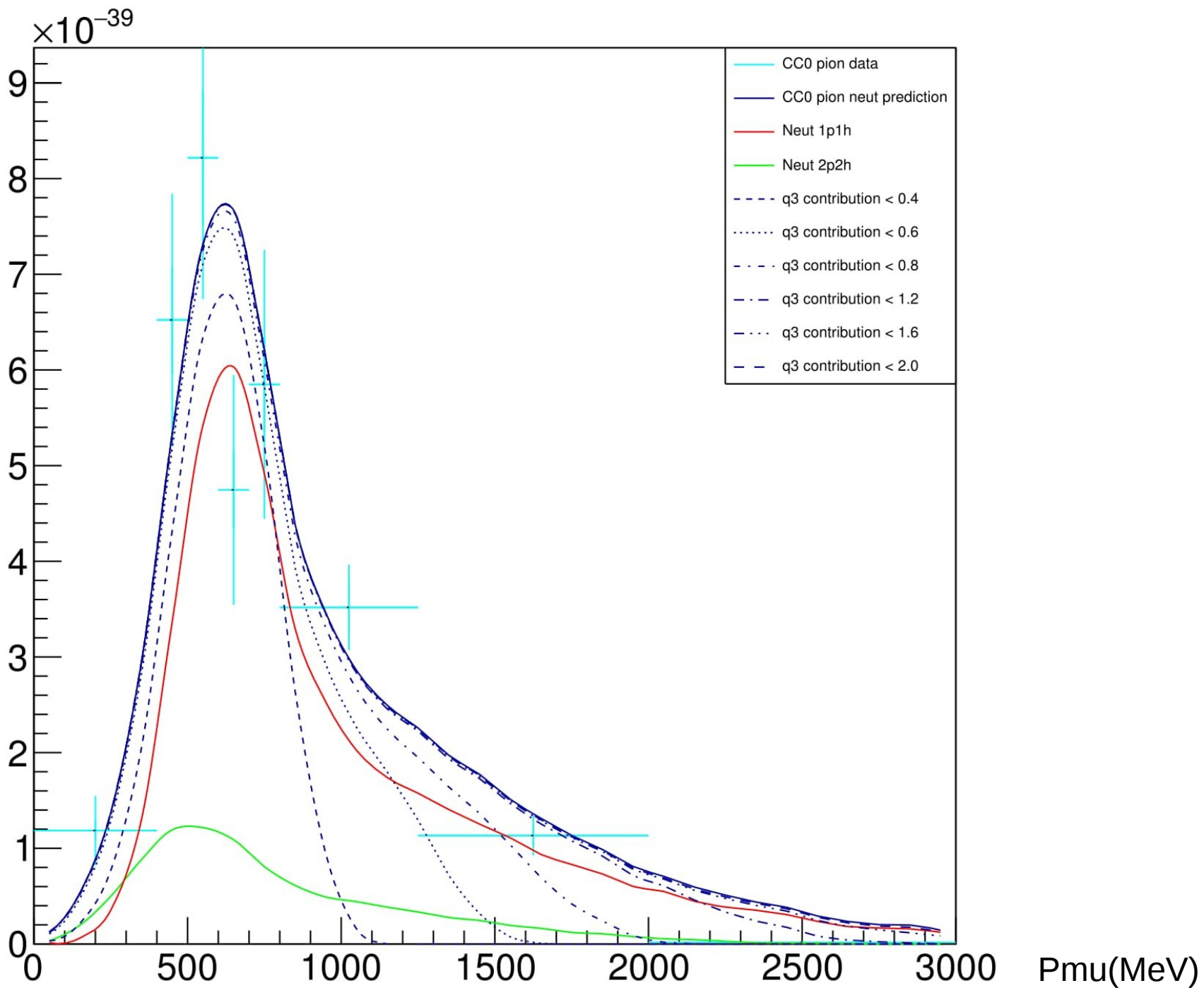
$0.98 < \cos\text{Ang} < 1.0$ (cc0pion)



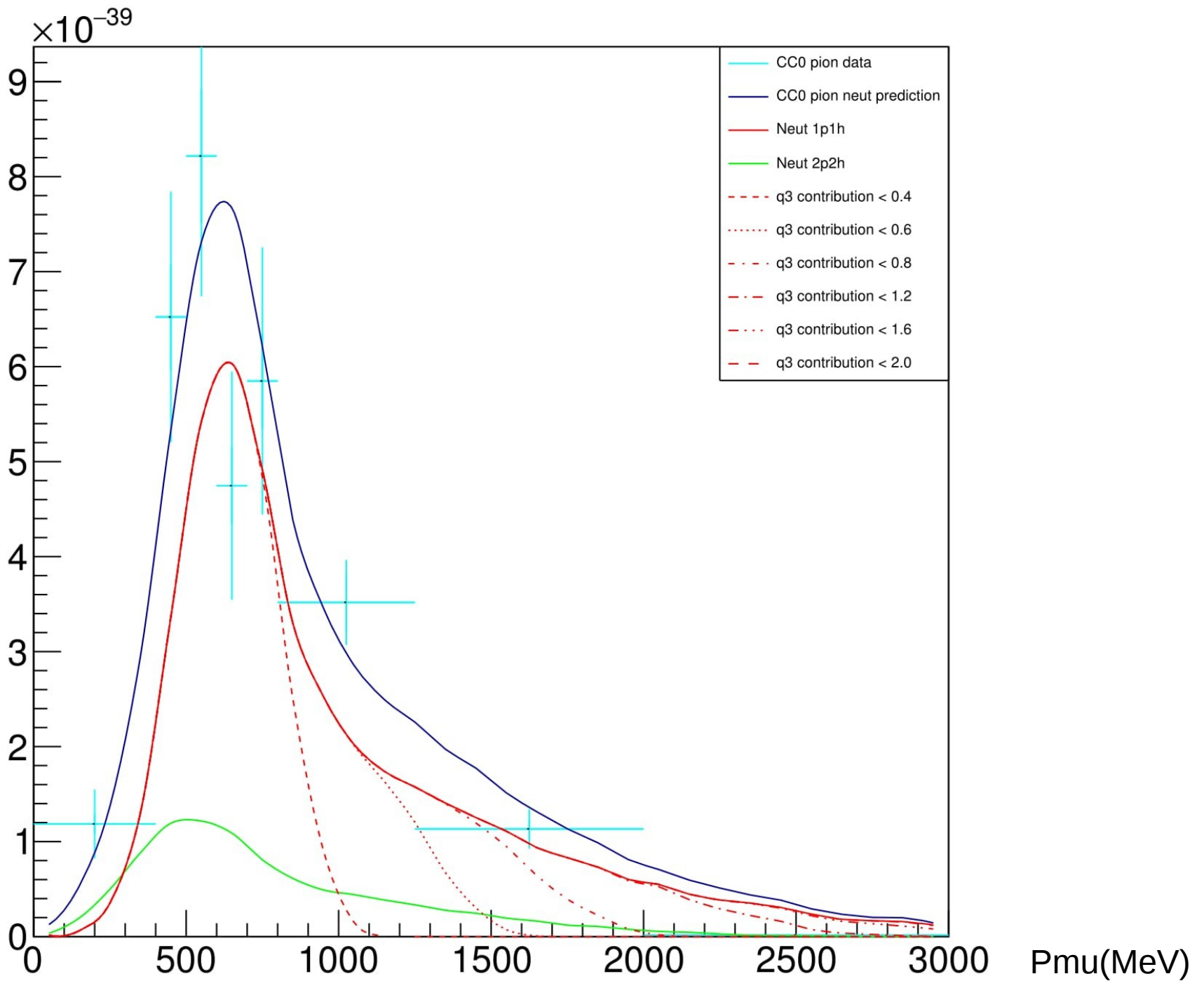
$0.98 < \cos\text{Ang} < 1.0$ (cc0pion)



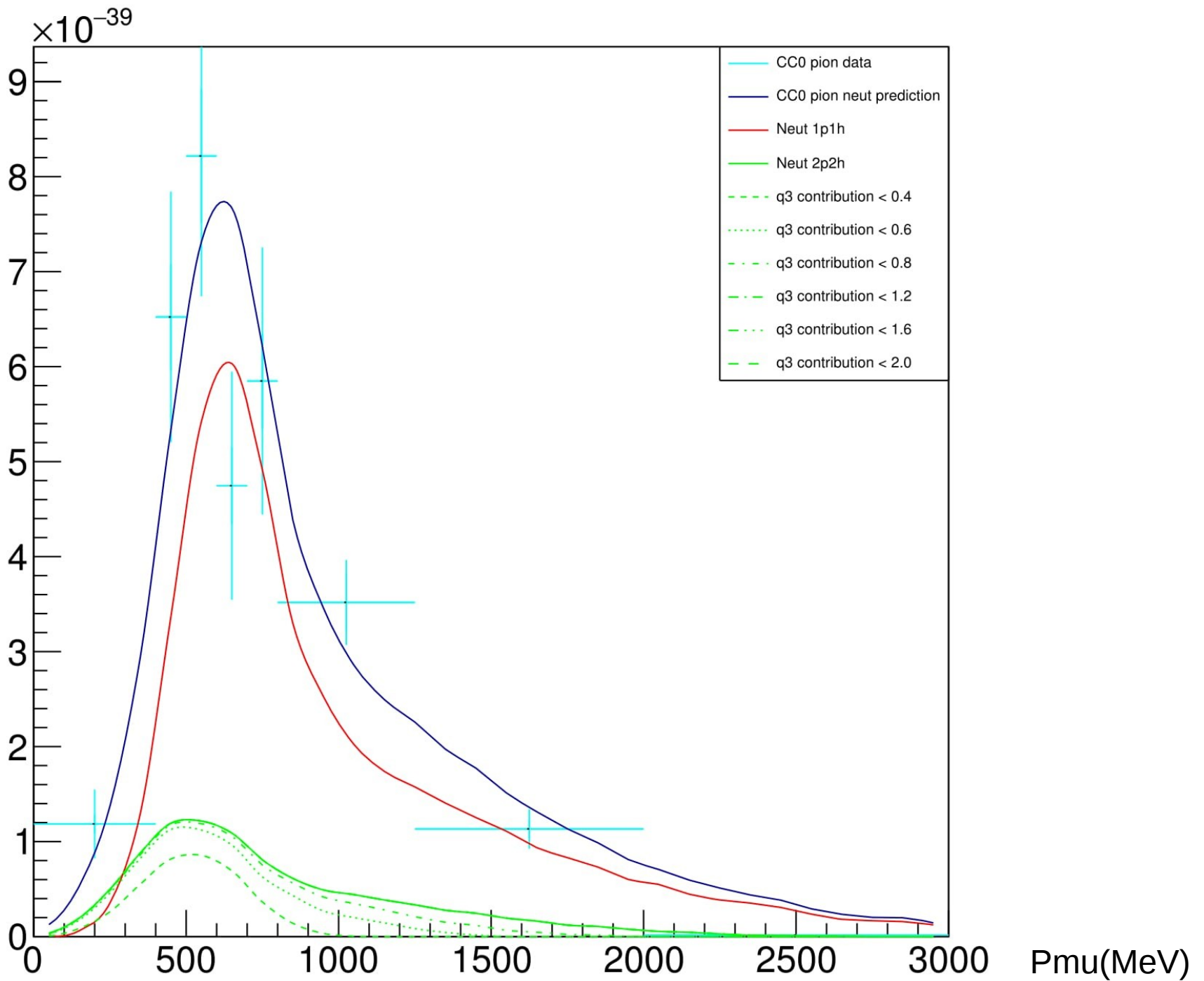
$0.9 < \cos\text{Ang} < 0.94$ (cc0pion)



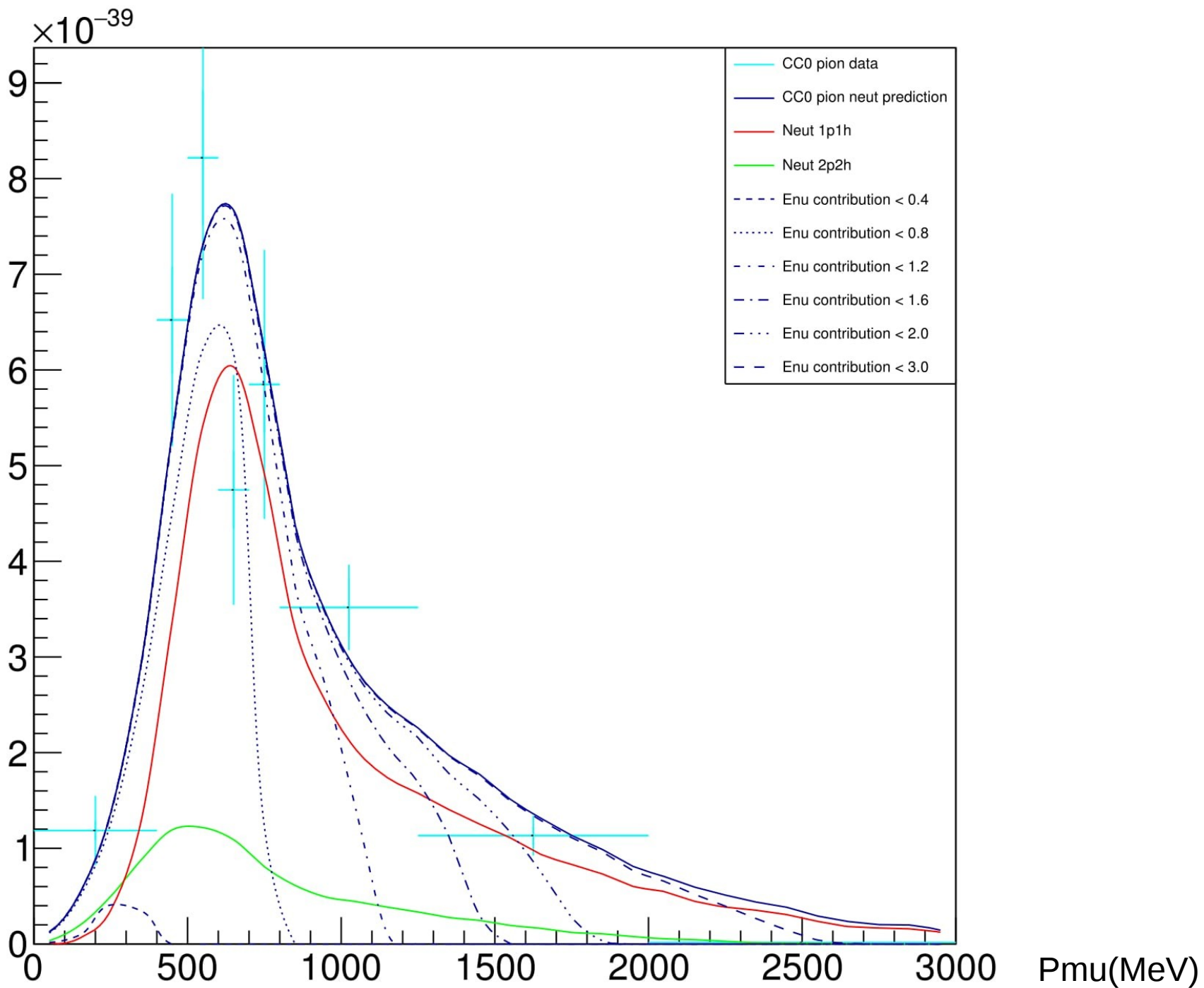
$0.9 < \cos\text{Ang} < 0.94$ (cc0pion)



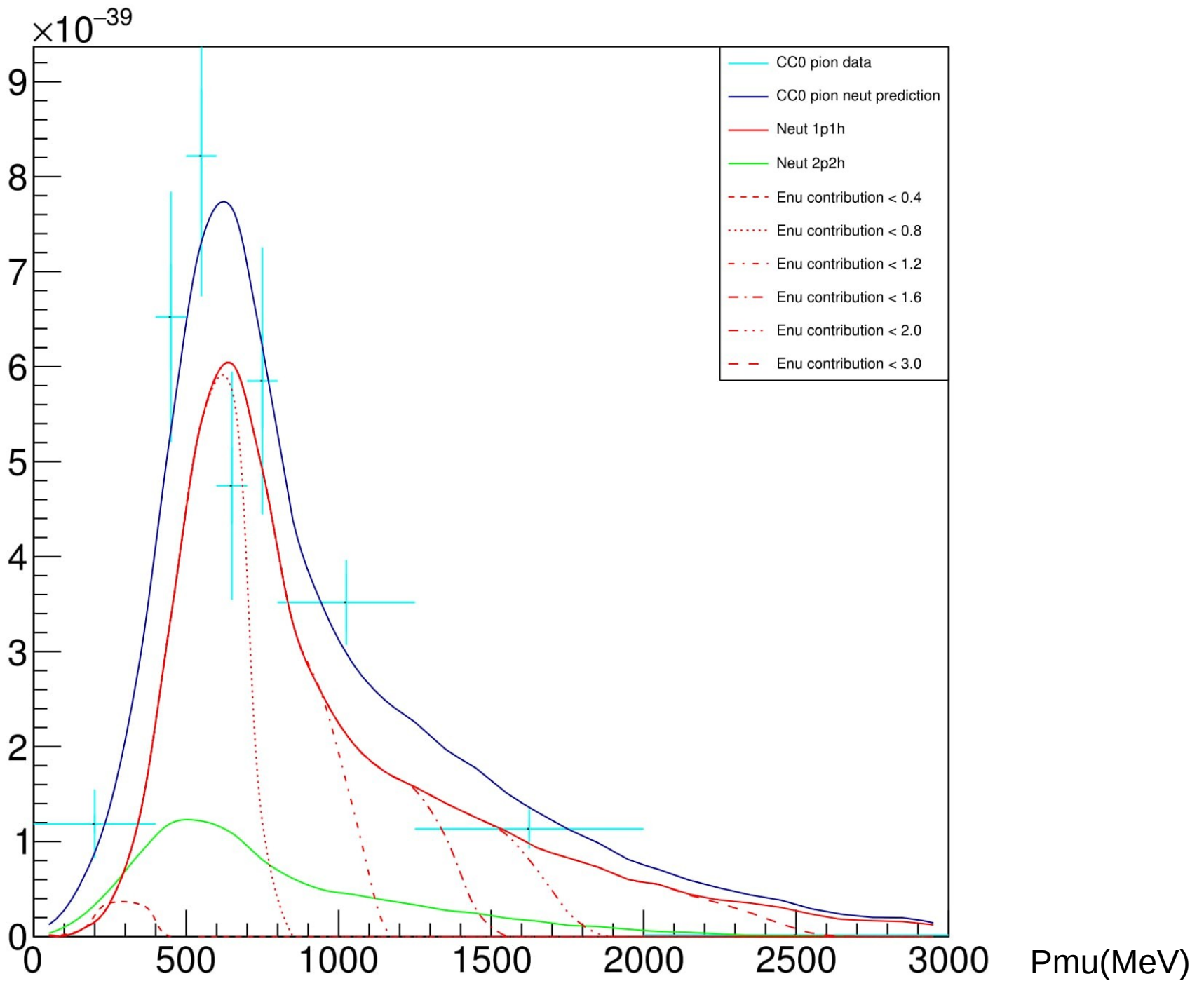
$0.9 < \cos\text{Ang} < 0.94$ (cc0pion)



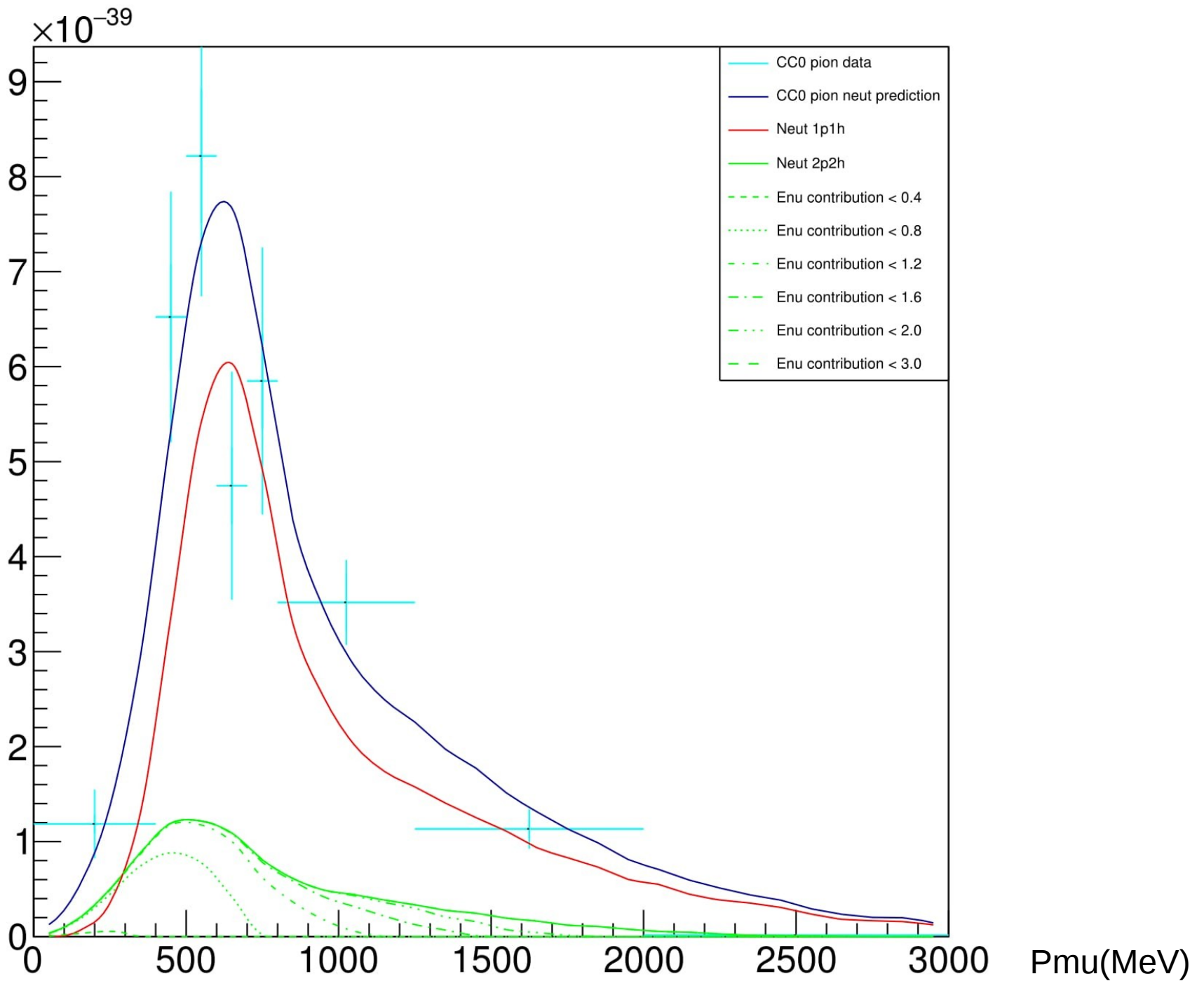
$0.9 < \cos\text{Ang} < 0.94$ (cc0pion)



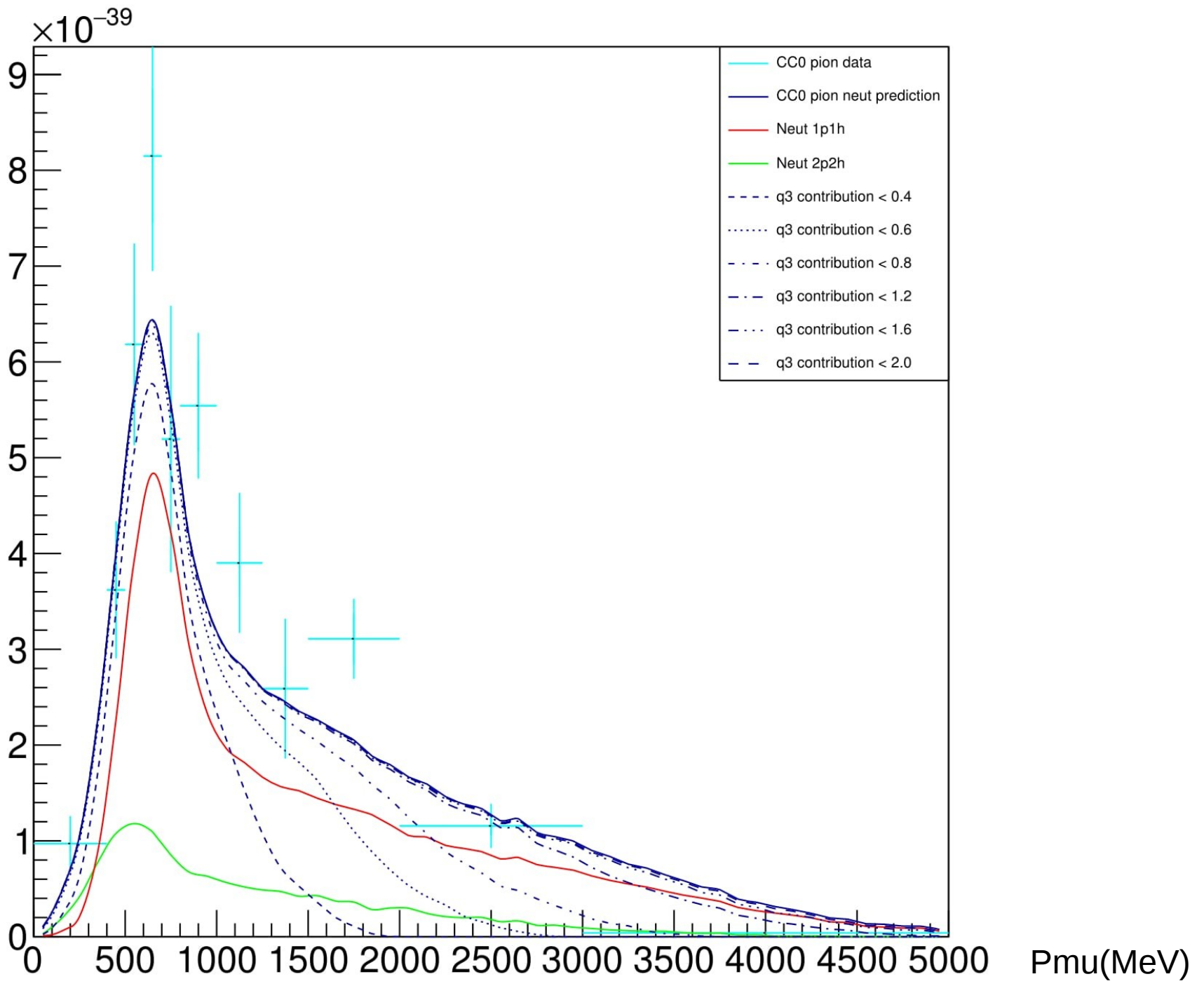
$0.9 < \cos\text{Ang} < 0.94$ (cc0pion)



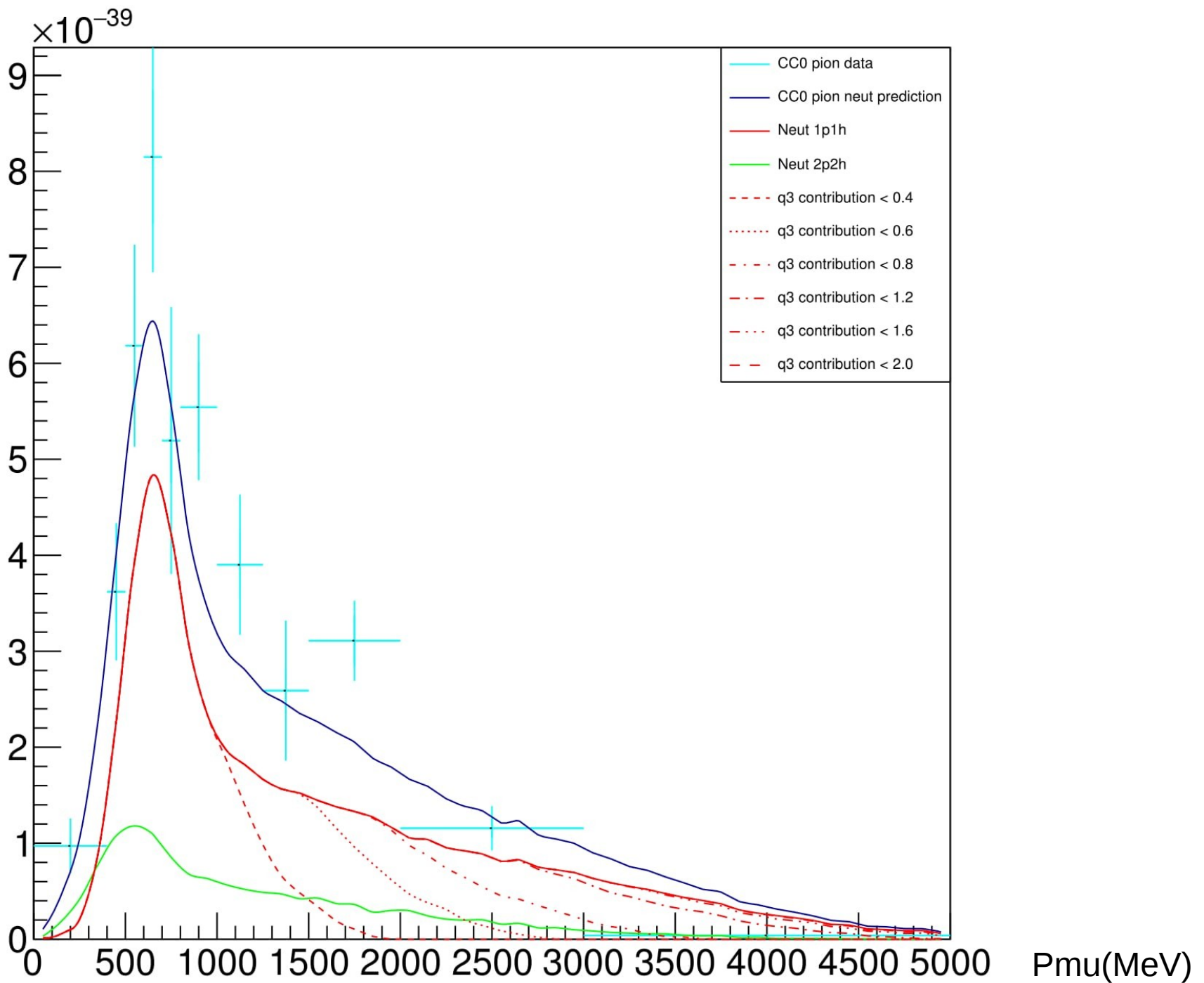
$0.9 < \cos\text{Ang} < 0.94$ (cc0pion)



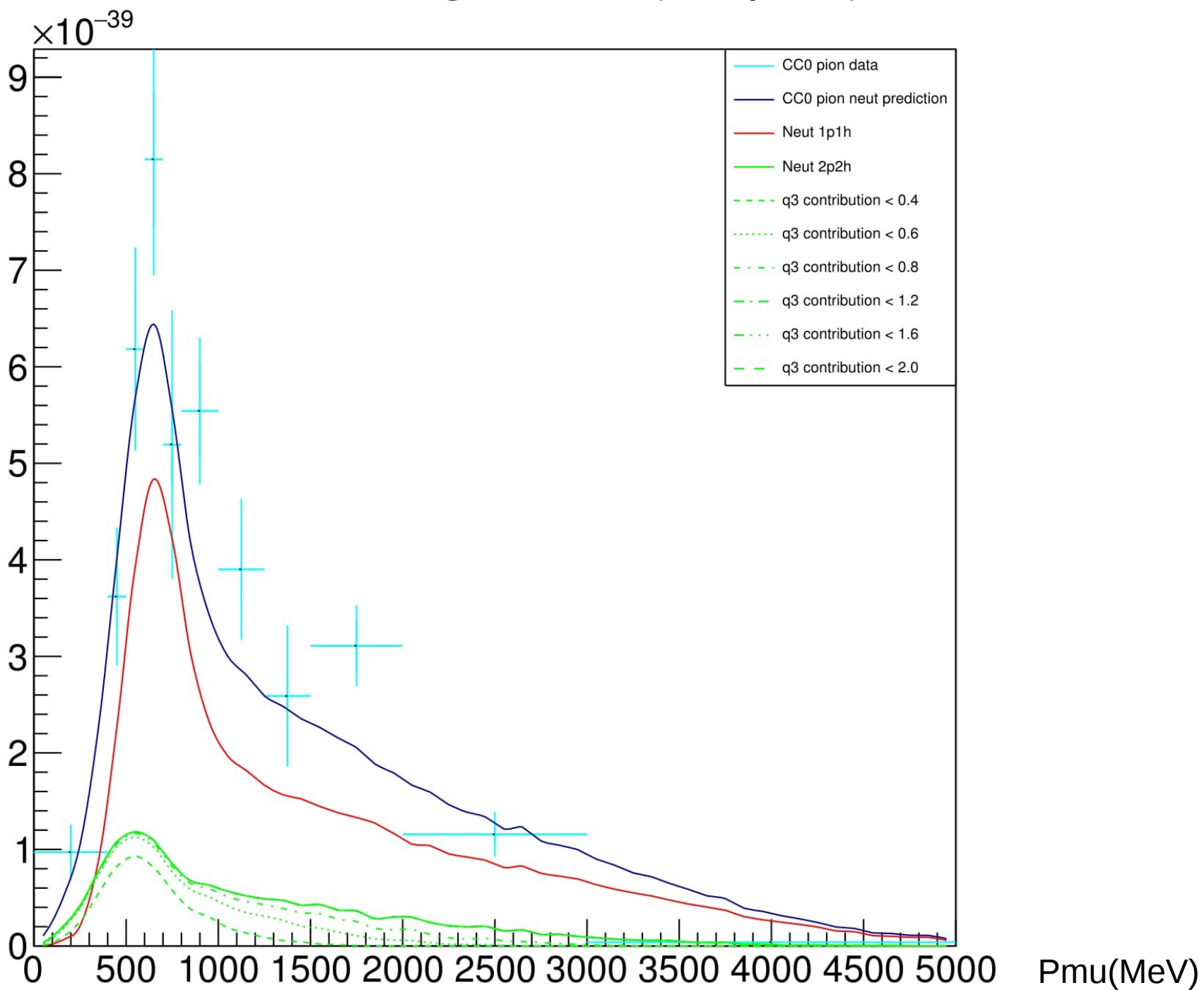
$0.94 < \cos\text{Ang} < 0.98$ (cc0pion)



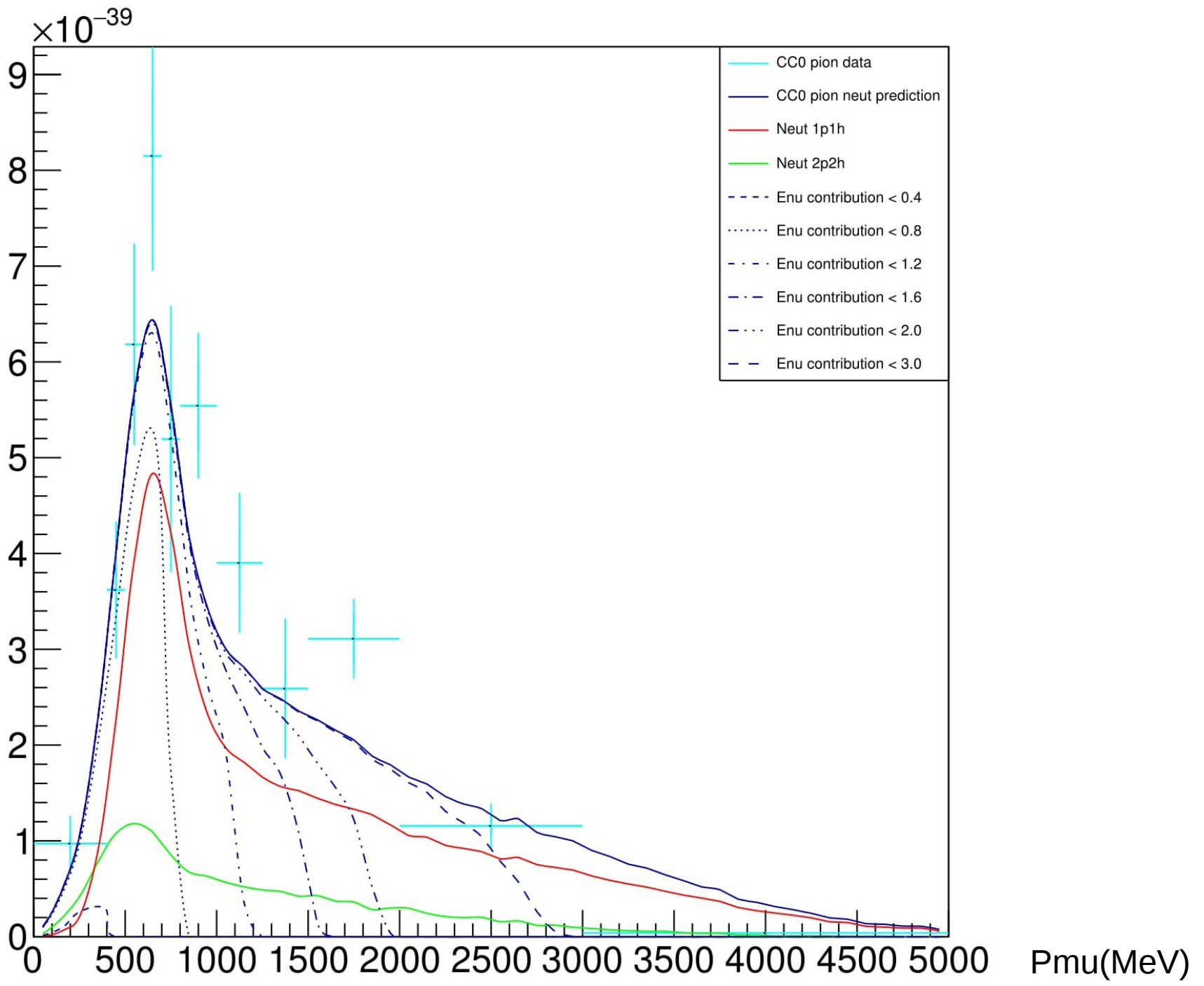
$0.94 < \cos\text{Ang} < 0.98$ (cc0pion)



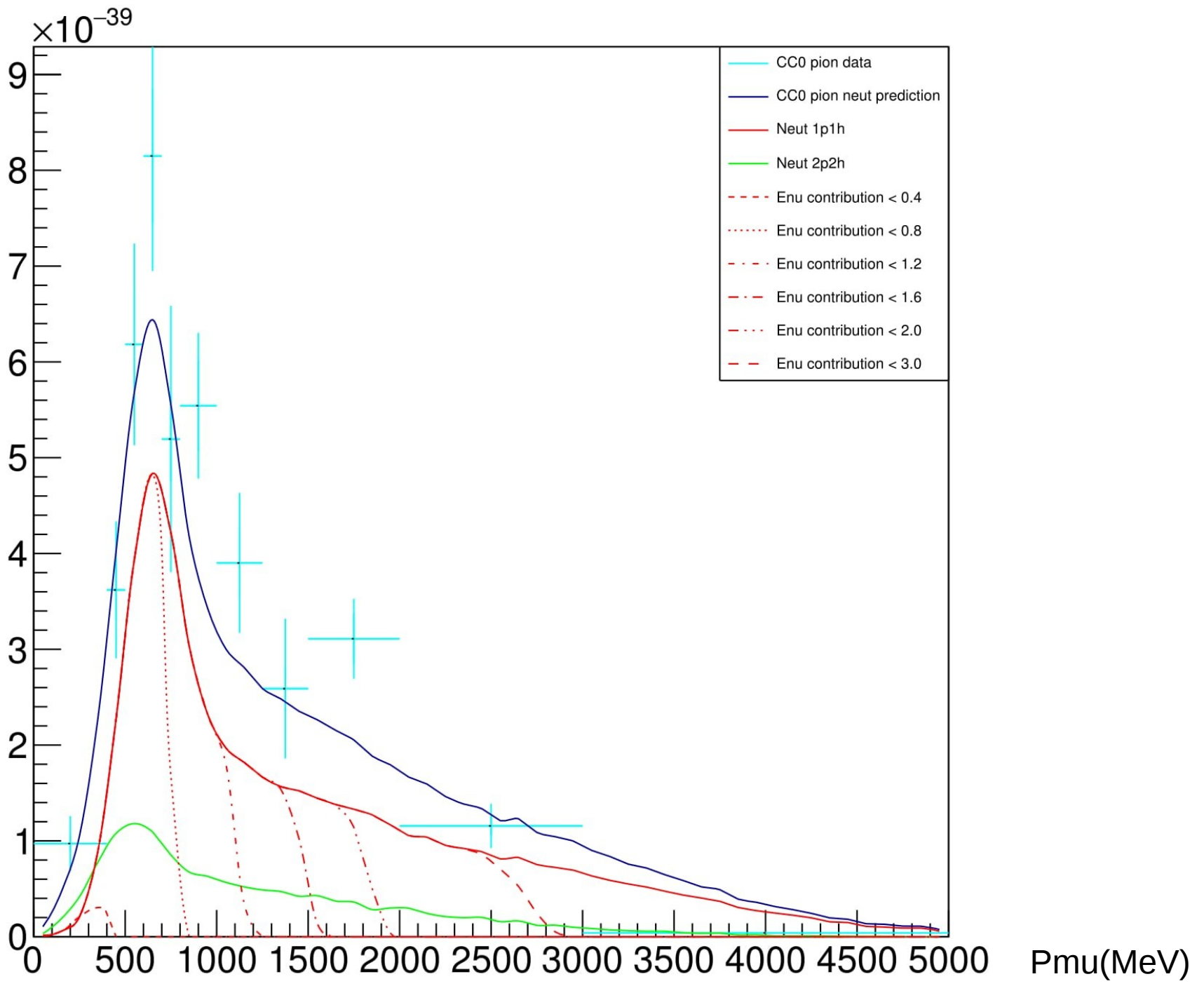
$0.94 < \cos\text{Ang} < 0.98$ (cc0pion)



$0.94 < \cos\text{Ang} < 0.98$ (cc0pion)



$0.94 < \cos\text{Ang} < 0.98$ (cc0pion)



$0.94 < \cos\text{Ang} < 0.98$ (cc0pion)

